

CONTENTS

NEW PRODUCTS	
PLASTIC VIALS	2
GC SEPTA	3
TOC VIALS	4
CRIMP SEALS W. PRE-CUT SEPTA	5
BI-METAL®CRIMP SEALS	6
VIALS & INSERTS	7
WELL PLATE SYSTEM	8
WELL PLATE MATS	9
VIALKITS	10-12
MICRO PRODUCT HANDLING	
LIMITED VOLUME INSERTS	13-15
AUTOSAMPLER VIALS	
XL®VIALS & CLOSURES	16-17
VIALS, SCREW TOP & CLOSURES	18
VIALS, CRIMP TOP & CLOSURES	19-20
HEADSPACE PRODUCTS	
VIALS & CLOSURES	21-22
SNAP-ON®CAPS	
SNAP-ON®CAPS 8mm	23
SNAP-ON®CAPS 11mm	24
SNAP-ON®CAPS 13mm	25
SNAP-ON®CAPS 20mm	26
PRODUCT SELECTION BY OEM	
AGILENT	27-31
ALCOTT	32-34
BECKMAN	35-36
CHEMSPEED	37
CMA	38
CTC	39-40
DANI	41-42
DIONEX	43
DU PONT	44
FISONS	45-47
HITACHI	48-49
ICI	50
JASCO	51-53
PERKIN-ELMER	54-58
SGE	59
SHIMADZU	60-64
SIEMENS	65
SPARK	66
TSP	67-69
UNICAM	70-72
VARIAN	73-76
WATERS	77-83
ZYMARK	84
SCINTILLATION PRODUCTS	
SCINTILLATION VIALS	85
VOA PRODUCTS	
EPA VIALS	86
STORAGE VIALS	
SHELL VIALS	87
SAMPLE VIALS	88-89
SERUM BOTTLES	90
INJECTION VIALS	91
LOW PROFILE & BIO-GRIP VIALS	92
VIALSTATION & VIALTAINER	93
CRIMPER	94

PLASTIC VIALS



PLASTIC MICRO VIALS

POLYPROPYLENE

These vials are precision injection-molded and fit a variety of autosamplers. Polypropylene provides safety from breakage and dimension tolerance reliability for capping and instrumentation use.

This vials are non-ionic, minimizing pH changes and ion contamination.

CAT.NO.	VOLUME	SIZE	CAP SIZE	CASE PACK
---------	--------	------	----------	-----------

CRIMP VIALS

158000	0.30ml	12x32mm	11mm	1000 pcs
158001	0.75ml	12x32mm	11mm	1000 pcs

SCREW VIALS

158005	0.30ml	12x32mm	9-425	1000 pcs
--------	--------	---------	-------	----------

TOPAS[®] MICRO VIALS

PLASTIC

For ion chromatography use

CAT.NO.	VOLUME	SIZE	CAP SIZE	CASE PACK
---------	--------	------	----------	-----------

158010	0.75ml	12x32mm	11mm	100 pcs
--------	--------	---------	------	---------

TOPAS[®] VIALS WITH GLASS INSERTS

PLASTIC

Limited volume inserts are type 1 borosilicate glass with a maximum volume of 400µl. The only contact between your product and the seal is the borosilicate glass insert which is compatible with organic solvents for gas and liquid chromatography.

These transparent vials are an economical alternative to glass vials with fused inserts. Possible breakage of the insert is reduced to a minimum.

CAT.NO.	VOLUME	SIZE	CAP SIZE	CASE PACK
---------	--------	------	----------	-----------

158050	0.4ml	12x32mm	11mm	100 pcs
--------	-------	---------	------	---------



GC-INJECTION PORT SEPTA

TEMPERATURE LIMIT

Theoretically silicone rubber retains its properties over a range of -100 to +315°C. But different formulations of silicone rubber have different characteristics which affect its performance at high temperatures. Additionally, the injection port temperature that is set on the GC is not an actual measure of the septum temperature. Most injection ports are designed with fins on the septum nut to help cool the septum. The actual septum temperature in most ports set at 400°C is usually in the range of 280°C or less (although the temperature one inch into the port will be 400°C).

SEPTUM BLEED

The traditional method of making low bleed septa is to polymerize and cross-link the silicone heavily, then bake it to drive off residuals, which results in a hard septum. Other septa can be conditioned by heating in the GC injection port, but once they are punctured the internal components are exposed and tend to show bleed.

SEPTUM CORING

Septum coring is an issue with anyone concerned with plugged needles or columns. Our septa have an excellent high-temperature softness, which reduces the incidence of tearing. This softness also enhances resealability and increases durability. It accommodates the use of wider needles or needles that are slightly bent, without a needle guide. However, we recommend the use of a needle guide since it extends the life of any septum by confining punctures to a small area.

CAT.NO.	COLOR	DIAMETER	TEMP/C	CASE	PACK
156003	green	9.5mm	300°	25	pcs
156015	red	9.5mm	400°	25	pcs
156018	blue	9.5mm	350°	25	pcs
156004	green	11.0mm	300°	25	pcs
156016	red	11.0mm	400°	25	pcs
156019	blue	11.0mm	350°	25	pcs
156005	green	12.5mm	300°	25	pcs
156017	red	12.5mm	400°	25	pcs
156020	blue	12.5mm	350°	25	pcs
156031	green	17.0mm	300°	25	pcs
156035	red	17.0mm	400°	25	pcs
156036	blue	17.0mm	350°	25	pcs

TOC VIALS



SHIMADZU- ASI-5000A

VIALS WITH SPECIAL TOP

CAT.NO.	VOLUME	SIZE	OEM P/N	CASE PACK
155800	5ml	12x100mm	630-00342-11	100 pcs

SNAP CAPS

155802				100 pcs
--------	--	--	--	---------

VIAL KIT- contains 155800 & 155802

155804				100 pcs
--------	--	--	--	---------

VIALS WITH SPECIAL RIM TOP

CAT.NO.	VOLUME	SIZE	OEM P/N	CASE PACK
155810	42ml	30x95mm	630-00342-42	24 pcs

SNAP CAPS

155812			630-00342-22	24 pcs
--------	--	--	--------------	--------

PARAFILM

155813			630-00342-23	24 pcs
--------	--	--	--------------	--------

VIAL HS SET

155814			630-00342-02	24 pcs
--------	--	--	--------------	--------



SHIMADZU- TOC- ASI-V

VIALS WITH SCREW TOP

CAT.NO.	VOLUME	SIZE	FOR CAPS	CASE PACK
155815	24ml	23x86mm	20-400	100 pcs
155820	40ml	28x95mm	24-000	100 pcs

SCREW CAPS OPEN TOP

155817		20-400		100 pcs
155822		24-400		100 pcs

SILICONE/PTFE SEPTA

155818		20-400		100 pcs
155823		24-000		100 pcs

CRIMP SEALS



ALUMINUM CRIMP SEALS WITH PRE-CUT SEPTA

Septa are pre-cut for easy needle penetration

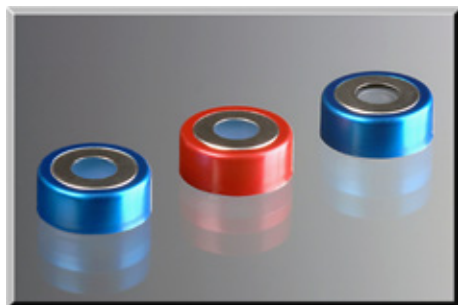
CRIMP SEALS 8mm

CAT.NO.	DESCRIPTION	COLOR	CASE PACK
156300	Silicone/PTFE single slit	natural	100 pcs
156301		red	100 pcs
156302		blue	100 pcs
156303		gold	100 pcs
156304		green	100 pcs
156305	Silicone/PTFE cross slit	natural	100 pcs
156306		red	100 pcs
156307		blue	100 pcs
156308		gold	100 pcs
156309		green	100 pcs
156310	Silicone/PTFE star slit	natural	100 pcs
156311		red	100 pcs
156312		blue	100 pcs
156313		gold	100 pcs
156314		green	100 pcs

CRIMP SEALS 11mm

CAT.NO.	DESCRIPTION	COLOR	CASE PACK
156325	Silicone/PTFE single slit	natural	100 pcs
156326		red	100 pcs
156327		blue	100 pcs
156328		gold	100 pcs
156329		green	100 pcs
156330	Silicone/PTFE cross slit	natural	100 pcs
156331		red	100 pcs
156332		blue	100 pcs
156333		gold	100 pcs
156334		green	100 pcs
156335	Silicone/PTFE star slit	natural	100 pcs
156336		red	100 pcs
156337		blue	100 pcs
156338		gold	100 pcs
156339		green	100 pcs

BI-METAL[®] CRIMP SEALS



BI-METAL[®] SEALS & SEPTA

These new Bi-Metal crimp seals were especially designed for use in the CTC Combi PAL autosampler. The center portion is made of tin and can be picked up by a robot magnet. Crimping is very easy because the outside is made of aluminum.

These crimp seals solve all the problems incurred with the present steel seals available that are very hard to crimp and decrimp.

Bi-Metal crimp seals with 8mm hole can be used for SPME.

TEMPERATURE RANGE:

Butyl/PTFE	140°C
blue Silicone/PTFE	200°C
red silicone/PTFE	250°C

CAT.NO.	DIAM	DESCRIPTION	CASE PACK
RED CRIMP SEALS with 8mm hole			
157115	20mm	butyl/PTFE	100 pcs
157116	20mm	blue Silicone/PTFE	100 pcs
157117	20mm	red Silicone/PTFE	100 pcs
BLUE CRIMP SEALS with 8mm hole			
157120	20mm	butyl/PTFE	100 pcs
157121	20mm	blue Silicone/PTFE	100 pcs
157122	20mm	red Silicone/PTFE	100 pcs
GREEN CRIMP SEALS with 8mm hole			
157125	20mm	butyl/PTFE	100 pcs
157126	20mm	blue Silicone/PTFE	100 pcs
157127	20mm	red Silicone/PTFE	100 pcs
GOLD CRIMP SEALS with 8mm hole			
157130	20mm	butyl/PTFE	100 pcs
157131	20mm	blue Silicone/PTFE	100 pcs
157132	20mm	red Silicone/PTFE	100 pcs
SILVER CRIMP SEALS with 8mm hole			
157135	20mm	butyl/PTFE	100 pcs
157136	20mm	blue Silicone/PTFE	100 pcs
157137	20mm	red Silicone/PTFE	100 pcs

GOLD-SILVER CRIMP SEALS with 5.5mm hole
for use with smaller magnet that is used for 11mm steel seals

157140	20mm	butyl/PTFE	100 pcs
157141	20mm	blue Silicone/PTFE	100 pcs
157142	20mm	red Silicone/PTFE	100 pcs

VIALS & INSERTS



VIALS WITH GLASS INSERTS

BOROSILICATE GLASS

Alternative to the very high priced vials with fused inserts

- Insert automatically centers in vial
- Large opening for ease of pipetting
- Perfect seal to septa
- Volume 0.3ml

No plastic or metal springs needed for alignment. The inserts are always at the proper height for full injection of sample, preventing the needle from bending or breaking the insert.

Since the insert is always at same position in the neck of the vial a perfect seal to the septa is assured.

Available for crimp neck vials 151123, 151124, 151125 and 151126 Use aluminum crimp seals or snap caps 11mm.

Inserts are pre-installed in vials for immediate use.

CRIMP VIALS WITH HANGING INSERTS

Uses inserts 156105

CAT.NO.	VOLUME	SIZE	TYPE	CASE PACK
155700	0.3ml	12x32mm	clear glass	100 pcs
155701	0.3ml	12x32mm	amber glass	100 pcs

VIALS WITH WRITING SPOT

155702	0,3ml	12x32mm	clear glass	100 pcs
155703	0.3ml	12x32mm	amber glass	100 pcs

CRIMP VIALS WITH STANDARD INSERTS

Uses inserts 150820

155705	0.3ml	12x32mm	clear glass	100 pcs
155706	0.3ml	12x32mm	amber glass	100 pcs

VIALS WITH WRITING SPOT

155707	0,3ml	12x32mm	clear glass	100 pcs
155708	0.3ml	12x32mm	amber glass	100 pcs

XL® SCREW VIALS WITH STANDARD INSERTS

Uses inserts 155650

CAT.NO.	VOLUME	SIZE	TYPE	CASE PACK
155710	0.3ml	12x32mm	clear glass	100 pcs
155711	0.3ml	12x32mm	amber glass	100 pcs

VIALS WITH WRITING SPOT

155712	0,3ml	12x32mm	clear glass	100 pcs
155713	0.3ml	12x32mm	amber glass	100 pcs

WELL PLATE SYSTEM



WELL PLATES WITH GLASS INSERTS

Suitable for combinatorial chemistry, solid phase extraction, GC and LC.

Many users have expressed the desire to have well plates that can be used in the chromatography lab. They have to be inert to solvents used in chromatography. Sample times and amount of sample are being reduced.

Chemists want to handle samples with an inert glass surface and closures that have a septa with a PTFE surface which can be easily punctured and reseals instantly.

Today's sample must be compact because instruments have the ability to run many more samples in the same amount of time. Septa become more critical as the number of injections increase. Coring becomes an issue.

We offer the following inserts for well plates.

- 0.2ml
- 0.3ml
- 0.5ml
- 1.2ml

The glass inserts are closed with snap caps with slit silicone/PTFE septa. The septa does not core or leak. The well plates are made of polypropylene and can be used by themselves.



CAT.NO.	VOLUME	TYPE	CASE PACK
---------	--------	------	-----------

WELL PLATES WITH MOUNTED INSERTS

156525	0.2ml	flat bottom	1 each
156526	0.3ml	conical	1 each
156527	0.5ml	conical	1 each
156528	1.2ml	round bottom	1 each

WELL PLATES WITH MOUNTED INSERTS & SNAP CAPS

156530	0.2ml	flat bottom	1 each
156531	0.3ml	conical	1 each
156532	0.5ml	conical	1 each
156533	1.2ml	round bottom	1 each

INSERTS

156555	0.2ml	flat bottom	100 pcs
156556	0.3ml	conical	100 pcs
156557	0.5ml	conical	100 pcs
156558	1.2ml	round bottom	100 pcs

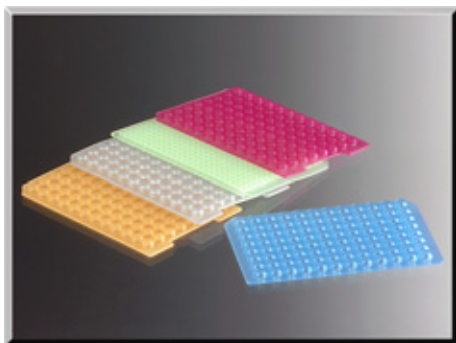
SNAP CAPS WITH SILICONE/PTFE SLIT SEPTA

CAT.NO.	COLOR	CASE PACK
---------	-------	-----------

156560	natural	100 pcs
156561	blue	100 pcs
156562	red	100 pcs
156563	green	100 pcs
156564	yellow	100 pcs



WELL PLATE MATS



THE NEW 96 WELL PLATE SEALING MATS

We offer a silicone sealing pad for 96 well round, 96 well square and 384 square plate formats.

The pad is made from a very high strength, low volatile premium grade silicone elastomer that includes a Teflon barrier.

ADDITIONAL ADVANTAGES

- Tightest possible seal against evaporation and contamination
- Temperature stability from -85 F to +400 F
- Easy puncturing to facilitate sample extraction
- Re-seals after up to 200 punctures
- PTFE coated to resist effects of chemicals and organic solvents
- Autoclavable for sterilization
- Extreme resistance to tearing
- Installs in 10 seconds or less
- Made from high purity, premium grade silicone rubber
- Designed and molded to your specific requirements

CAT.NO.	CASE PACK
WELL PLATE, VIALS & MAT MOUNTED	
156800	1 each
WELL PLATE & VIALS MOUNTED	
156805	1 each
SEALING MATS	
156810	1 each
156811 CROSS SLIT	1 each
VIALS	
156820	100 pcs



SCREW VIALS & CAPS

BOROSILICATE GLASS

These standard vial kits are suitable for most autosamplers. Vials and closures are packed in our reclosable transparent Kitpack™. Kit contains autosampler vials 12x32mm and black screw caps 8-425 with mounted septa as listed below.

STANDARD OPENING VIALS

CAT.NO.	VOLUME	SEPTA	CASE PACK
CLEAR GLASS			
158500	1.5ml	Silicone/PTFE	100 pcs
158501	1.5ml	Rubber/PTFE	100 pcs
158502	1.5ml	PTFE/Silicone/PTFE	100 pcs
158510	1.5ml	Silicone/PTFE single slit	100 pcs
158511	1.5ml	Silicone/PTFE cross slit	100 pcs
158512	1.5ml	Silicone/PTFE star slit	100 pcs
AMBER GLASS			
158505	1.5ml	Silicone/PTFE	100 pcs
158506	1.5ml	Rubber/PTFE	100 pcs
158507	1.5ml	PTFE/Silicone/PTFE	100 pcs
158515	1.5ml	Silicone/PTFE single slit	100 pcs
158516	1.5ml	Silicone/PTFE cross slit	100 pcs
158517	1.5ml	Silicone/PTFE star slit	100 pcs

All vials accept inserts 150610, 150613 and 150824



XL® SCREW VIALS & CAPS

BOROSILICATE GLASS

XL® Vials have a 40% wider opening to reduce the chance of bent needles. Kit contains autosampler vials 12x32mm and blue screw caps 9-425 with mounted septa as listed below.

WIDE OPENING VIALS

CAT.NO.	VOLUME	SEPTA	CASE PACK
CLEAR GLASS			
158601	1.5ml	Silicone/PTFE	100 pcs
158606	1.5ml	Rubber/PTFE	100 pcs
158611	1.5ml	PTFE/Silicone/PTFE	100 pcs
158616	1.5ml	Silicone/PTFE single slit	100 pcs
158621	1.5ml	Silicone/PTFE cross slit	100 pcs
158626	1.5ml	Silicone/PTFE star slit	100 pcs
AMBER GLASS			
158646	1.5ml	Silicone/PTFE	100 pcs
158651	1.5ml	Rubber/PTFE	100 pcs
158656	1.5ml	PTFE/Silicone/PTFE	100 pcs
158661	1.5ml	Silicone/PTFE single slit	100 pcs
158666	1.5ml	Silicone/PTFE cross slit	100 pcs
158671	1.5ml	Silicone/PTFE star slit	100 pcs

All vials accept inserts 150820 and 150821



CRIMP VIALS & ALUMINUM SEALS

BOROSILICATE GLASS

These standard vial kits are suitable for most autosamplers. Vials and closures are packed in our reclosable transparent Kitpack™. Kit contains autosampler vials 12x32mm and silver crimp seals 11mm with mounted septa as listed below.

STANDARD OPENING VIALS

CAT.NO.	VOLUME	SEPTA	CASE PACK
CLEAR GLASS			
158400	1.5ml	Rubber/PTFE	100 pcs
158401	1.5ml	Silicone/PTFE	100 pcs
158402	1.5ml	PTFE/Silicone/PTFE	100 pcs
158405	1.5ml	Silicone/PTFE single slit	100 pcs
158406	1.5ml	Silicone/PTFE cross slit	100 pcs
158407	1.5ml	Silicone/PTFE star slit	100 pcs
AMBER GLASS			
158410	1.5ml	Rubber/PTFE	100 pcs
158411	1.5ml	Silicone/PTFE	100 pcs
158412	1.5ml	PTFE/Silicone/PTFE	100 pcs
158415	1.5ml	Silicone/PTFE single slit	100 pcs
158416	1.5ml	Silicone/PTFE cross slit	100 pcs
158417	1.5ml	Silicone/PTFE star slit	100 pcs

All vials accept inserts 150610, 150613 and 150824



CRIMP VIALS & SNAP CAPS

BOROSILICATE GLASS

Kit contains autosampler vials 12x32mm and polyethylene snap caps 11mm with mounted septa as listed below.

WIDE OPENING VIALS

CAT.NO.	VOLUME	SEPTA	CASE PACK
CLEAR GLASS			
158725	1.5ml	PTFE	100 pcs
158728	1.5ml	Rubber/PTFE	100 pcs
158727	1.5ml	Silicone/PTFE	100 pcs
158726	1.5ml	PTFE/Silicone/PTFE	100 pcs
158729	1.5ml	Linerless	100 pcs
158730	1.5ml	Silicone/PTFE single slit	100 pcs
158731	1.5ml	Silicone/PTFE cross slit	100 pcs
158732	1.5ml	Silicone/PTFE star slit	100 pcs
AMBER GLASS			
158735	1.5ml	PTFE	100 pcs
158738	1.5ml	Rubber/PTFE	100 pcs
158737	1.5ml	Silicone/PTFE	100 pcs
158736	1.5ml	PTFE/Silicone/PTFE	100 pcs
158739	1.5ml	Linerless	100 pcs
158740	1.5ml	Silicone/PTFE single slit	100 pcs
158741	1.5ml	Silicone/PTFE cross slit	100 pcs
158742	1.5ml	Silicone/PTFE star slit	100 pcs

All vials accept inserts 156105, 150820 and 150821



PLASTIC VIALS & CAPS

POLYPROPYLENE

These vial kits are suitable for most autosamplers. Vials and closures are packed in our reclosable transparent Kitpack™. Kit contains autosampler vials 12x32mm and silver crimp seals 11mm with mounted septa as listed below.

CAT.NO.	VOLUME	SEPTA	CAP SIZE	CASE PACK
---------	--------	-------	----------	-----------

CRIMP VIALS

158800	0.30ml	Rubber/PTFE	11mm	100 pcs
158801	0.30ml	Silicone/PTFE	11mm	100 pcs
158810	0.75ml	Rubber/PTFE	11mm	100 pcs
158811	0.75ml	Silicone/PTFE	11mm	100 pcs

SCREW VIALS

158805	0.30ml	Rubber/PTFE	9-425	100 pcs
158806	0.30ml	Silicone/PTFE	9-425	100 pcs

SHELL VIALS & CAPS

BOROSILICATE GLASS

These vials and caps are an economical alternative to standard crimp and screw thread vials suitable for one-time use in most autosamplers that don't pressurize the vials.

The polyethylene caps have a 0.25mm star-center which eliminates vacuum build-up in the vials after injection. A special inside guide holds and centers limited volume inserts Cat.No.150820 and 150821 with up to 400µl capacity.

Complete with one-piece polyethylene caps which serve as both cap and septum.

CAT.NO.	VOLUME	SIZE	CASE PACK
---------	--------	------	-----------

CLEAR GLASS

150301	2.0ml	12x32mm	100 pcs
--------	-------	---------	---------

AMBER GLASS

150306	2.0ml	12x32mm	100 pcs
--------	-------	---------	---------



LIMITED VOLUME INSERTS



MICROSERT® LIMITED VOLUME INSERTS BOROSILICATE GLASS

NEW INSERTS

The insert is precisely in the center of the vial

- Insert automatically centers in the vial
- Large opening for ease of pipetting
- Perfect seal to septa
- Volume 250 μ l

Alternative to the very high priced vials with fused inserts

No plastic or metal spring needed for alignment. The insert is always at the proper height for full injection of sample preventing the needle from bending or breaking the insert.

Since the insert is always at the same position in the neck of the vial a perfect seal to the septa is assured.

Inserts also come pre-installed in vials with or without caps for immediate use. See page 8 (Cat.No. 155700, 155701, 155702 and 155703) for details.

For use with crimp vials 151123, 151124, 151125 & 151126

<u>CAT.NO.</u>	<u>VOLUME</u>	<u>SIZE</u>	<u>CASE PACK</u>
156105	250 μ l	6 x 30mm	100 pcs

LIMITED VOLUME INSERTS



MICROSERT® LIMITED VOLUME INSERTS

BOROSILICATE GLASS

Limited Volume Inserts for milli- and microliter samples

Conical bottom provide total downward drainage for maximum retrieval of contents by syringe or micro pipets. Can be used for small reactions, storage and shipping. Used in bio-chemical and pharmaceutical industries. Ideal for injectable chemicals, drugs and reagents used in chromatography.

CONICAL INSERTS

CAT.NO.	VOLUME	SIZE	FOR VIALS	CASE PACK
150613*	50µl	4x27mm	150640/151120	100 pcs
150610	100µl	5x30mm	150640/151120	100 pcs
150820	300µl	6x30mm	155600/151123	100 pcs

* requires compression spring #150614 for support

CYLINDRICAL INSERTS

CAT.NO.	VOLUME	SIZE	FOR VIALS	CASE PACK
150824	200µl	5x30mm	150640/151120	100 pcs
150821	400µl	6x30mm	155600/151123	100 pcs

MICROSERT® LIMITED VOLUME VIALS

AGILENT

Use crimp seals or snap caps 8mm

CAT.NO.	VOL	SIZE	TYPE	OEM	CASE PACK
151111	200µl	6x32mm	conical	5180-0844	100 pcs
151112	300µl	6x32mm	round	5180-0841	100 pcs
151140*	500µl	7x30mm	conical	5180-0806	100 pcs
151142*	700µl	7x30mm	round	5180-0805	100 pcs
151141*	700µl	7x30mm	cylindrical		100 pcs

*amber glass

UNICAM, BECKMAN, SGE

Use crimp seals or snap caps 8mm

CAT.NO.	VOLUME	SIZE	TYPE	CASE PACK
152610	700µl	7x40mm	conical	100 pcs
152611*	700µl	7x40mm	conical	100 pcs

* amber glass



LIMITED VOLUME INSERTS



AGILENT

Use crimp seals 11mm or screw caps 8-425
Vials have conical bottom for maximum retrieval of contents.

CAT.NO.	VOLUME	SIZE	TYPE	CASE PACK
153800	1.1ml	12x32mm	crimp	100 pcs
153810	1.1ml	12x32mm	screw	100 pcs

SIEMENS

Use crimp seals or snap caps 13mm

CAT.NO.	VOLUME	SIZE	TYPE	CASE PACK
152500	2.5ml	11x40mm	cylindrical	100 pcs
152510	1.0ml	11x40mm	conical	100 pcs

WATERS WISP™ 48 VIAL CARRIAGE

Use with 4ml vials 150745 & 150746 in the 48 vials carousel

CAT.NO.	VOLUME	SIZE	OEM	CASE PACK
---------	--------	------	-----	-----------

GLASS INSERTS

150710	300µl	6x40mm	15199	100 pcs
150714	300µl	6x40mm	72704	100 pcs

PLASTIC INSERTS

150743	300µl	6x40mm	72030	100 pcs
--------	-------	--------	-------	---------

All above inserts require compression springs #150715 for support.

WATERS WISP™ 96 VIAL CARRIAGE

use with 1ml vials 150721 & 150751 in the 96 vial carousel

CAT.NO.	VOLUME	SIZE	OEM	CASE PACK
---------	--------	------	-----	-----------

150730	100µl	5x30mm	72294	100 pcs
150741	300µl	6x30mm		100 pcs

All above inserts require compression springs #150729 for support.

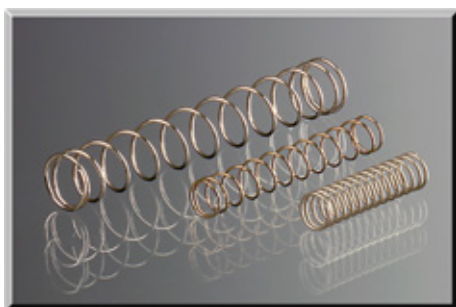
COMPRESSION SPRINGS

STAINLESS STEEL

Needed to support inserts in vials

CAT.NO.	FOR INSERTS	OEM	CASE PACK
---------	-------------	-----	-----------

150614	150613		100 pcs
150715	150710/150714/150743	72708	100 pcs
150729	150730/150741	72289	100 pcs





XL[®] VIALS

AUTOSAMPLER VIALS

BOROSILICATE GLASS

XL Vials have a 40% wider opening which reduces the chance of bent needles. These vials were designed for the Hewlett-Packard Robotic Arm Autosamplers 7673, 7673A and others.

Use screw caps 9-425

CAT.NO.	VOLUME	SIZE	CAP SIZE	CASE PACK
---------	--------	------	----------	-----------

WIDE OPENING VIALS

155600	2ml	12x32mm	9-425	100 pcs
155601*	2ml	12x32mm	9-425	100 pcs

VIALS WITH WRITING SPOT

155602	2ml	12x32mm	9-425	100 pcs
155603*	2ml	12x32mm	9-425	100 pcs

* amber glass

XL[®] SCREW CAPS OPEN TOP

POLYPROPYLENE

CAT.NO.	COLOR	SIZE	CASE PACK
---------	-------	------	-----------

155610	black	9-425	100 pcs
155611	blue	9-425	100 pcs
155612	red	9-425	100 pcs
155613	green	9-425	100 pcs
155614	yellow	9-425	100 pcs

SEPTA

CAT.NO.	DESCRIPTION	CASE PACK
---------	-------------	-----------

155615	Silicone/PTFE	100 pcs
155616	PTFE/Silicone/PTFE	100 pcs
155617	Rubber/ETFE	100 pcs
155618	Silicone/PTFE slit	100 pcs

TEFLON[®] SEPTA

CAT.NO.	DIAM	THICKNESS	CASE PACK
---------	------	-----------	-----------

155619	9mm	0.25mm	100 pcs
--------	-----	--------	---------

XL[®] SCREW CAPS WITH MOUNTED SEPTA

CAT.NO.	COLOR	DESCRIPTION	CASE PACK
---------	-------	-------------	-----------

155620	black	Silicone/PTFE	100 pcs
155621	blue	Silicone/PTFE	100 pcs
155622	red	Silicone/PTFE	100 pcs
155623	yellow	Silicone/PTFE	100 pcs
155624	green	Silicone/PTFE	100 pcs



XL[®] SCREW CAPS WITH MOUNTED SEPTA

CAT.NO.	COLOR	DESCRIPTION	CASE PACK
155625	black	PTFE/Silicone/PTFE	100 pcs
155626	blue	PTFE/Silicone/PTFE	100 pcs
155627	red	PTFE/Silicone/PTFE	100 pcs
155628	yellow	PTFE/Silicone/PTFE	100 pcs
155629	green	PTFE/Silicone/PTFE	100 pcs

XL[®] SCREW CAPS WITH MOUNTED SEPTA

CAT.NO.	COLOR	DESCRIPTION	CASE PACK
155630	black	Rubber/ETFE	100 pcs
155631	blue	Rubber/ETFE	100 pcs
155632	red	Rubber/ETFE	100 pcs
155633	yellow	Rubber/ETFE	100 pcs
155634	green	Rubber/ETFE	100 pcs

XL[®] SCREW CAPS WITH MOUNTED SEPTA

CAT.NO.	COLOR	DESCRIPTION	CASE PACK
155635	black	Silicone/PTFE single slit	100 pcs
155636	blue	Silicone/PTFE single slit	100 pcs
155637	red	Silicone/PTFE single slit	100 pcs
155638	yellow	Silicone/PTFE single slit	100 pcs
155639	green	Silicone/PTFE single slit	100 pcs

XL[®] SCREW CAPS WITH MOUNTED SEPTA

CAT.NO.	COLOR	DESCRIPTION	CASE PACK
155640	black	Silicone/PTFE cross slit	100 pcs
155641	blue	Silicone/PTFE cross slit	100 pcs
155642	red	Silicone/PTFE cross slit	100 pcs
155643	yellow	Silicone/PTFE cross slit	100 pcs
155644	green	Silicone/PTFE cross slit	100 pcs

XL[®] SCREW CAPS WITH MOUNTED SEPTA

CAT.NO.	COLOR	DESCRIPTION	CASE PACK
155645	black	Silicone/PTFE star slit	100 pcs
155646	blue	Silicone/PTFE star slit	100 pcs
155647	red	Silicone/PTFE star slit	100 pcs
155648	yellow	Silicone/PTFE star slit	100 pcs
155649	green	Silicone/PTFE star slit	100 pcs

MICROSERT[®] LIMITED VOLUME VIALS

CAT.NO.	VOLUME	SIZE	TYPE	CASE PACK
155650	250µl	6x30mm	conical	100 pcs
155651	400µl	6x30mm	cylindrical	100 pcs

AUTOSAMPLER VIALS



AUTOSAMPLER VIALS

BOROSILICATE GLASS

use screw caps 8-425

CAT.NO.	VOLUME	SIZE	TYPE	CASE PACK
---------	--------	------	------	-----------

STANDARD VIALS

150640	1.5ml	12x32mm		100 pcs
150641*	1.5ml	12x32mm		100 pcs

VIALS WITH WRITING SPOT

150642	1.5ml	12x32mm	writing spot	100 pcs
150643*	1.5ml	12x32mm	writing spot	100 pcs

*amber glass

SCREW CAPS OPEN TOP

POLYPROPYLENE

Screw caps 8-425 with open top

CAT.NO.	SEPTA	COLOR	CASE PACK
---------	-------	-------	-----------

150601	8mm	black	100 pcs
150601R	8mm	red	100 pcs
150601B	8mm	blue	100 pcs
150601G	8mm	green	100 pcs
150601Y	8mm	yellow	100 pcs

SEPTA

For screw caps 150601

CAT.NO.	SEPTA	DESCRIPTION	CASE PACK
---------	-------	-------------	-----------

150603	8mm	Butyl/PTFE	100 pcs
150604	8mm	Silicone/PTFE	100 pcs
150606	8mm	Rubber/ETFE	100 pcs
150605	8mm	PTFE	1000 pcs

SCREW CAPS WITH MOUNTED SEPTA

POLYPROPYLENE

Black screw caps with septa mounted. Also available in other colors on request.

CAT.NO.	SIZE	DESCRIPTION	CASE PACK
---------	------	-------------	-----------

150650	8-425	Silicone/PTFE	100 pcs
150651	8-425	Rubber/ETFE	100 pcs
150652	8-425	PTFE/Silicone/PTFE	100 pcs
150655	8-425	Silicone/PTFE single slit	100 pcs
150656	8-425	Silicone/PTFE cross slit	100 pcs
150657	8-425	Silicone/PTFE star slit	100 pcs

MICROSERT® LIMITED VOLUME INSERTS

CAT.NO.	VOLUME	SIZE		CASE PACK
---------	--------	------	--	-----------

150613*	50µl	4x27mm	conical	100 pcs
150610	100µl	5x30mm	conical	100 pcs
150824	200µl	5x30mm	cylindrical	100 pcs

*Compression Springs 150614 needed for support

COMPRESSION SPRINGS

CAT.NO.	INSERTS	CASE PACK
---------	---------	-----------

150614	4x27mm	100 pcs
--------	--------	---------



AUTOSAMPLER VIALS



AUTOSAMPLER VIALS

BOROSILICATE GLASS

STANDARD VIALS

use crimp seals 11mm

CAT.NO.	VOLUME	SIZE	CAP SIZE	CASE PACK
151120	1.5ml	12x32mm	11mm	100 pcs
151121*	1.5ml	12x32mm	11mm	100 pcs

VIALS WITH WRITING SPOT

151130	1.5ml	12x32mm	11mm	100 pcs
151131*	1.5ml	12x32mm	11mm	100 pcs

*amber glass

ALUMINUM CRIMP SEALS & SEPTA

Available with a variety of different liner materials

- ETFE-faced natural rubber for routine analysis
- PTFE-faced silicone rubber provides excellent resealing
- PTFE-silicone-PTFE reduces coring problems
- Butyl/PTFE-faced liner for long term storage

All crimp seals have large opening to reduce bent needles

CAT.NO.	SIZE	COLOR	CASE PACK
---------	------	-------	-----------

RUBBER/ETFE SEPTA

151216	11mm	silver	100 pcs
151216R	11mm	red	100 pcs
151216B	11mm	blue	100 pcs
151216G	11mm	green	100 pcs
151216Y	11mm	gold	100 pcs

SILICONE/PTFE SEPTA

151266	11mm	silver	100 pcs
--------	------	--------	---------

PTFE/SILICONE/PTFE SEPTA

151267	11mm	silver	100 pcs
--------	------	--------	---------

BUTYL/PTFE SEPTA

151269	11mm		100 pcs
--------	------	--	---------

MICROSERT® LIMITED VOLUME INSERTS

BOROSILICATE GLASS

Inserts 150613 requires compression spring 150614 for support

CAT.NO.	VOLUME	SIZE	TYPE	CASE PACK
150613*	50µl	4x27mm	conical	100 pcs
150610	100µl	5x30mm	conical	100 pcs
150824	200µl	5x30mm	cylindrical	100 pcs

*Compression spring 150614 needed for support

COMPRESSION SPRINGS

STAINLESS STEEL

CAT.NO.	LENGTH	DIAM	INSERTS	CASE PACK
150614	37mm	5mm	4x27mm	100 pcs

AUTOSAMPLER VIALS



AUTOSAMPLER VIALS

BOROSILICATE GLASS

WIDE OPENING VIALS

Use crimp seals or snap caps 11mm

CAT.NO.	VOLUME	SIZE	CAP SIZE	CASE PACK
151123	1.5ml	12x32mm	11mm	100 pcs
151124*	1.5ml	12x32mm	11mm	100 pcs

VIALS WITH WRITING SPOT

151125	1.5ml	12x32mm	11mm	100 pcs
151126*	1.5ml	12x32mm	11mm	100 pcs

* amber glass

ALUMINUM CRIMP SEALS & SEPTA

Available with a variety of different liner materials

- ETFE-faced natural rubber for routine analysis
- PTFE-faced silicone rubber provides excellent resealing
- PTFE-silicone-PTFE reduces coring problems
- Butyl/PTFE-faced liner for long term storage

CAT.NO.	SIZE	TYPE	CASE PACK
151216	11mm	Rubber/ETFE	100 pcs
151266	11mm	Silicone/PTFE	100 pcs
151267	11mm	PTFE/Silicone/PTFE	100 pcs
151269	11mm	Butyl/PTFE	100 pcs

SNAP-ON™ CAPS

POLYETHYLENE

Natural colored snap caps 11mm

CAT.NO.	SIZE	DESCRIPTION	CASE PACK
153310	11mm	PTFE	100 pcs
153315	11mm	PTFE/Silicone/PTFE	100 pcs
153320	11mm	Silicone/PTFE	100 pcs
153325	11mm	Rubber/ETFE	100 pcs

SNAP CAPS LINERLESS

153330	11mm	molded	100 pcs
--------	------	--------	---------

MICROSERT® LIMITED VOLUME INSERTS

BOROSILICATE GLASS

These inserts will fit precisely into the above vials.

CAT.NO.	VOLUME	TYPE	CASE PACK
150820	300µl	conical	100 pcs
150821	400µl	cylindrical	100 pcs

NEW INSERTS

No plastic or metal spring needed for alignment. The insert is always at the proper height for full injection of sample preventing the needle from bending or breaking the insert. Since the insert is always at the same position in the neck of the vial a perfect seal to the septa is assured.

Available for vials 151123, 151124, 151125 & 151126

156105	300µl	conical	100 pcs
--------	-------	---------	---------

HEADSPACE VIALS



PERKIN-ELMER BOROSILICATE GLASS

HS40, HS100, HS101, HS6

All vials have a strengthened base with a specific radius design which will withstand internal pressures during analysis. Special crimp neck design prevents sample leakage at high temperatures.

CAT.NO.	VOLUME	SIZE	OEM	CASE PACK
151105	6ml	22x38mm	B0104235	100 pcs
151107	10ml	23x46mm		100 pcs
151103	20ml	23x75mm	B0104236	100 pcs
151108*	20ml	23x75mm		100 pcs

* amber glass

DANI HSS39.50, HSS86.50

CAT.NO.	VOLUME	SIZE	CASE PACK
152810	10ml	22x46mm	100 pcs
152800	20ml	22x75mm	100 pcs

AGILENT HP 7674

CAT.NO.	VOLUME	SIZE	CASE PACK
151114	6ml	22x38mm	100 pcs
151109	10ml	22x46mm	100 pcs
151102	20ml	22x75mm	100 pcs

TEKMAR, VARIAN 7000, 7050, GENESIS

CAT.NO.	VOLUME	SIZE	CASE PACK
150100	9ml	18x50mm	100 pcs
150101	12ml	18x65mm	100 pcs
150102	20ml	23x75mm	100 pcs

SHIMADZU HSS-2B

CAT.NO.	VOLUME	SIZE	CASE PACK
151199	27ml	30x58mm	100 pcs

ALUMINUM CRIMP SEALS & SEPTA

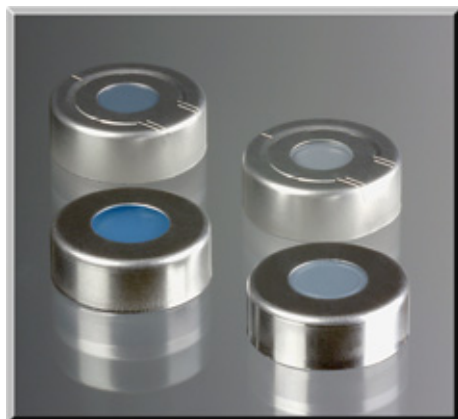
Crimp seals 20mm with center hole. Use only when internal pressure is low.

CAT.NO.	DIAM	DESCRIPTION	CASE PACK
151286	20mm	Butyl/PTFE	100 pcs
151287	20mm	Silicone/PTFE	100 pcs
151222	20mm	Rubber-Butyl/PTFE	100 pcs

PRESSURE RELIEF CRIMP SEALS & SEPTA

Special cap with bridges and scorelines which break at 3 bar

CAT.NO.	DIAM	DESCRIPTION	CASE PACK
151288	20mm	Butyl/PTFE	100 pcs
151289	20mm	Silicone/PTFE	100 pcs



HEADSPACE VIALS



CTC Combi PAL

All vials have a strengthened base with a specific radius design which will withstand internal pressures during analysis.

CAT.NO.	VOLUME	SIZE	CASE PACK
157100	10ml	22x46mm	100 pcs
157101*	10ml	22x46mm	100 pcs
157102	20ml	22x75mm	100 pcs
157103*	20ml	22x75mm	100 pcs

* amber glass

BI-METAL® SEALS & SEPTA

These new Bi-Metal crimp seals can be crimped as easily as aluminum seals. Center portion is made of tin for magnetic pick up by the robot.

Crimp seals have an 8mm hole for SPME use

CAT.NO.	DIAM	DESCRIPTION	CASE PACK
RED CRIMP SEALS			
157115	20mm	butyl/PTFE	100 pcs
157116	20mm	blue Silicone/PTFE	100 pcs
157117	20mm	red Silicone/PTFE	100 pcs

BLUE CRIMP SEALS

157120	20mm	butyl/PTFE	100 pcs
157121	20mm	blue Silicone/PTFE	100 pcs
157122	20mm	red Silicone/PTFE	100 pcs

GREEN CRIMP SEALS

157125	20mm	butyl/PTFE	100 pcs
157126	20mm	blue Silicone/PTFE	100 pcs
157127	20mm	red Silicone/PTFE	100 pcs

GOLD CRIMP SEALS

157130	20mm	butyl/PTFE	100 pcs
157131	20mm	blue Silicone/PTFE	100 pcs
157132	20mm	red Silicone/PTFE	100 pcs

SILVER CRIMP SEALS

157135	20mm	butyl/PTFE	100 pcs
157136	20mm	blue Silicone/PTFE	100 pcs
157137	20mm	red Silicone/PTFE	100 pcs

GOLD-SILVER CRIMP SEALS WITH 5.5mm HOLE

for use with smaller magnet that is used for 11mm steel seals

157140	20mm	butyl/PTFE	100 pcs
157141	20mm	blue Silicone/PTFE	100 pcs
157142	20mm	red Silicone/PTFE	100 pcs

STEEL CRIMP SEALS & SEPTA

CAT.NO.	DIAM	DESCRIPTION	CASE PACK
HOLE DIAMETER 6mm			
157105	20mm	Butyl/PTFE	100 pcs
157106	20mm	Blue Silicone/PTFE	100 pcs
157107	20mm	Red Silicone/PTFE	100 pcs
HOLE DIAMETER 8mm for SPME use			
157110	20mm	Butyl/PTFE	100 pcs
157111	20mm	Blue Silicone/PTFE	100 pcs
157112	20mm	Red Silicone/PTFE	100 pcs

SNAP-ON[®] CAPS



SNAP-ON[®] CAPS- 8mm

POLYETHYLENE

For use with all crimp top vials with 8mm crimp neck

Easily snaps on eliminating the use of crimpers

Holds approx. 30 psi internal pressure

Compatible with most autosamplers

Snap caps have a consistent seal pressure for all samples in the autosampler tray reducing the chance of failures caused by improper crimping

Available in two versions:

(1) with molded septa 0.25mm thick for single use

(2) with 5 different liners mounted inside the caps

- PTFE
- Silicone/PTFE
- pre-cut Silicone/PTFE
- PTFE/Silicone/PTFE
- Rubber/ETFE

CAT.NO.	DESCRIPTION	COLOR	CASE PACK
153410	PTFE	natural	100 pcs
153411		red	100 pcs
153412		blue	100 pcs
153413		yellow	100 pcs
153414		green	100 pcs
153415	PTFE/Silicone/PTFE	natural	100 pcs
153416		red	100 pcs
153417		blue	100 pcs
153418		yellow	100 pcs
153419		green	100 pcs
153420	Silicone/PTFE	natural	100 pcs
153421		red	100 pcs
153422		blue	100 pcs
153423		yellow	100 pcs
153424		green	100 pcs
153425	Rubber/ETFE	natural	100 pcs
153426		red	100 pcs
153427		blue	100 pcs
153428		yellow	100 pcs
153429		green	100 pcs
SNAP CAPS LINERLESS			
153430	molded 0.25mm	natural	100 pcs
153431		red	100 pcs
153432		blue	100 pcs
153433		yellow	100 pcs
153434		green	100 pcs
SNAP CAPS WITH SINGLE SLIT SEPTA			
153435	Silicone/PTFE	natural	100 pcs
153436		red	100 pcs
153437		blue	100 pcs
153438		yellow	100 pcs
153439		green	100 pcs
SNAP CAPS WITH CROSS SLIT SEPTA			
153440	Silicone/PTFE	natural	100 pcs
153441		red	100 pcs
153442		blue	100 pcs
153443		yellow	100 pcs
153444		green	100 pcs
SNAP CAPS WITH STAR SLIT SEPTA			
153445	Silicone/PTFE	natural	100 pcs
153446		red	100 pcs
153447		blue	100 pcs
153448		yellow	100 pcs
153449		green	100 pcs

SNAP-ON[®] CAPS



SNAP-ON[®] CAPS- 11mm

POLYETHYLENE

For use with all crimp top vials with 11mm crimp neck

Easily snaps on eliminating the use of crimpers

Holds approx. 30 psi internal pressure

Compatible with most autosamplers

Snap caps have a consistent seal pressure for all samples in the autosampler tray reducing the chance of failures caused by improper crimping

Available in two versions:

(1) with molded septa 0.25mm thick for single use

(2) with 5 different liners mounted inside the caps

- PTFE
- Silicone/PTFE
- pre-cut Silicone/PTFE
- PTFE/Silicone/PTFE
- Rubber/ETFE

CAT.NO.	DESCRIPTION	COLOR	CASE PACK
153310	PTFE	natural	100 pcs
153311		red	100 pcs
153312		blue	100 pcs
153313		yellow	100 pcs
153314		green	100 pcs
153315	PTFE/Silicone/PTFE	natural	100 pcs
153316		red	100 pcs
153317		blue	100 pcs
153318		yellow	100 pcs
153319		green	100 pcs
153320	Silicone/PTFE	natural	100 pcs
153321		red	100 pcs
153322		blue	100 pcs
153323		yellow	100 pcs
153324		green	100 pcs
153325	Rubber/ETFE	natural	100 pcs
153326		red	100 pcs
153327		blue	100 pcs
153328		yellow	100 pcs
153329		green	100 pcs
SNAP CAPS LINERLESS			
153330	molded 0.25mm	natural	100 pcs
153331		red	100 pcs
153332		blue	100 pcs
153333		yellow	100 pcs
153334		green	100 pcs
SNAP CAPS WITH SINGLE SLIT SEPTA			
153335	Silicone/PTFE	natural	100 pcs
153336		red	100 pcs
153337		blue	100 pcs
153338		yellow	100 pcs
153339		green	100 pcs
SNAP CAPS WITH CROSS SLIT SEPTA			
153345	Silicone/PTFE	natural	100 pcs
153346		red	100 pcs
153347		blue	100 pcs
153348		yellow	100 pcs
153349		green	100 pcs
SNAP CAPS WITH STAR SLIT SEPTA			
153340	Silicone/PTFE	natural	100 pcs
153341		red	100 pcs
153342		blue	100 pcs
153343		yellow	100 pcs
153344		green	100 pcs

SNAP-ON[®] CAPS



SNAP-ON[®] CAPS- 13mm

POLYETHYLENE

For use with all crimp top vials with 13mm crimp neck
Easily snaps on vials eliminating the use of crimpers
Holds approx. 30 psi internal pressure
Compatible with most autosamplers

Snap caps have a consistent seal pressure for all samples in the autosampler tray reducing the chance of failures caused by improper crimping

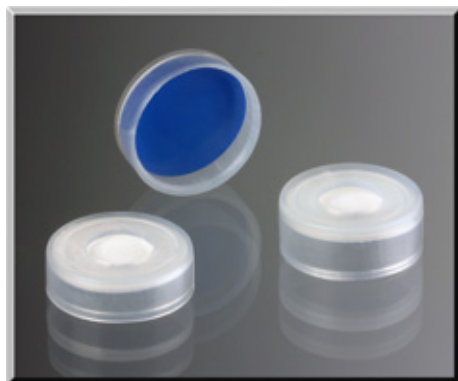
Available in two versions:

- (1) with molded septa 0.25mm thick for single use
- (2) with 5 different liners mounted inside the caps

- PTFE
- Silicone/PTFE
- pre-cut Silicone/PTFE
- PTFE/Silicone/PTFE
- Rubber/ETFE

CAT.NO.	DESCRIPTION	COLOR	CASE PACK
158110	PTFE	natural	100 pcs
158111		red	100 pcs
158112		blue	100 pcs
158113		yellow	100 pcs
158114		green	100 pcs
158115	PTFE/Silicone/PTFE	natural	100 pcs
158116		red	100 pcs
158117		blue	100 pcs
158118		yellow	100 pcs
158119		green	100 pcs
158120	Silicone/PTFE	natural	100 pcs
158121		red	100 pcs
158122		blue	100 pcs
158123		yellow	100 pcs
158124		green	100 pcs
158125	Rubber/ETFE	natural	100 pcs
158126		red	100 pcs
158127		blue	100 pcs
158128		yellow	100 pcs
158129		green	100 pcs
SNAP CAPS LINERLESS			
158130	molded 0.25mm	natural	100 pcs
158131		red	100 pcs
158132		blue	100 pcs
158133		yellow	100 pcs
158134		green	100 pcs
SNAP CAPS WITH SINGLE SLIT SEPTA			
158135	Silicone/PTFE	natural	100 pcs
158136		red	100 pcs
158137		blue	100 pcs
158138		yellow	100 pcs
158139		green	100 pcs
SNAP CAPS WITH CROSS SLIT SEPTA			
158140	Silicone/PTFE	natural	100 pcs
158141		red	100 pcs
158142		blue	100 pcs
158143		yellow	100 pcs
158144		green	100 pcs
SNAP CAPS WITH STAR SLIT SEPTA			
158145	Silicone/PTFE	natural	100 pcs
158146		red	100 pcs
158147		blue	100 pcs
158148		yellow	100 pcs
158149		green	100 pcs

SNAP-ON[®] CAPS



SNAP-ON[®] CAPS- 20mm

POLYETHYLENE

For use with all crimp top vials with 20mm crimp neck

Easily snaps on vials eliminating the use of crimpers

Holds approx. 30 psi internal pressure

Compatible with most autosamplers

Snap caps have a consistent seal pressure for all samples in the autosampler tray reducing the chance of failures caused by improper crimping

Available with 2 different liners mounted inside the caps

- Silicone/PTFE
- Rubber/ETFE

CAT.NO.	DESCRIPTION	THICKNESS	CASE PACK
158250	Silicone/PTFE	1mm	100 pcs
158255	Silicone/PTFE	2mm	100 pcs
158260	Butyl/PTFE	1mm	100 pcs
158265	Butyl/PTFE	2mm	100 pcs



AUTOSAMPLER VIALS

BOROSILICATE GLASS

7673A/B, 7670, 7671/2, 1050, 1090

use crimp seals or snap caps 11mm

These vials feature a wide opening which reduces needle damage and easier needle positioning. Also allowing the use of larger Limited Volume Inserts with a capacity of up to 300µl
Cat.No. 150820 conical and 150821 cylindrical.

CAT.NO.	VOLUME	SIZE	OEM	CASE PACK
---------	--------	------	-----	-----------

WIDE OPENING VIALS

151123	2ml	12x32mm	5180-3375	100 pcs
151124*	2ml	12x32mm		100 pcs

VIALS WITH MARKING AREA

151125	2ml	12x32mm	5180-0543	100 pcs
151126*	2ml	12x32mm	5180-3376	100 pcs

* amber glass

ALUMINUM CRIMP SEALS & SEPTA

All crimp seals have large opening to reduce bent needles

CAT.NO.	SIZE	COLOR	OEM	CASE PACK
---------	------	-------	-----	-----------

RUBBER/ETFE SEPTA

151216	11mm	silver	5181-1210	100 pcs
151216B	11mm	blue	5181-1215	100 pcs
151216G	11mm	green	5181-1216	100 pcs
151216R	11mm	red	5181-1217	100 pcs

SILICONE/PTFE SEPTA

151266	11mm	silver	5182-0552	100 pcs
--------	------	--------	-----------	---------

PTFE/SILICONE/PTFE SEPTA

151267	11mm	silver	5181-1211	100 pcs
--------	------	--------	-----------	---------

SNAP-ON® CAPS

POLYETHYLENE

These snap caps 11mm are perfectly matched to work with above vials.

CAT.NO.	DESCRIPTION	OEM	CASE PACK
---------	-------------	-----	-----------

153310	PTFE	5182-0540	100 pcs
153315	PTFE/Silicone/PTFE	5182-0566	100 pcs
153322	Silicone/PTFE	5182-0541	100 pcs
153335	Silicone/PTFE slit	5183-4511	100 pcs
153325	Rubber/ETFE (natural)	5182-0550	100 pcs
153326	Rubber/ETFE (red)	5182-0874	100 pcs
153327	Rubber/ETFE (blue)	5182-0873	100 pcs
153329	Rubber/ETFE (green)	5182-0860	100 pcs
153330	Linerless	5182-0542	100 pcs



XL® AUTOSAMPLER VIALS

BOROSILICATE GLASS

HP 7673 A/B

Use XL™ Screw Caps

CAT.NO.	VOLUME	SIZE	OEM	CASE PACK
WIDE OPENING VIALS				
155600	2ml	12x32mm	5182-0714	100 pcs
155601*	2ml	12x32mm		100 pcs
VIALS WITH WRITING SPOT				
155602	2ml	12x32mm	5182-0715	100 pcs
155603*	2ml	12x32mm	5182-0716	100 pcs

* amber glass

XL® SCREW CAPS WITH MOUNTED SEPTA

CAT.NO.	COLOR	DESCRIPTION	OEM	CASE PACK
155631	blue	Rubber/ETFE	5182-0717	100 pcs
155632	red	Rubber/ETFE	5182-0719	100 pcs
155634	green	Rubber/ETFE	5182-0718	100 pcs
155621	blue	Silicone/PTFE	5182-0720	100 pcs
155622	red	Silicone/PTFE	5182-0722	100 pcs
155624	green	Silicone/PTFE	5182-0721	100 pcs
155626	blue	PTFE/Silicone/PTFE	5182-0723	100 pcs
155627	red	PTFE/Silicone/PTFE	5182-0725	100 pcs
155629	green	PTFE/Silicone/PTFE	5182-0724	100 pcs
155636	blue	Silicone/PTFE slit	5183-2076	100 pcs
155637	red	Silicone/PTFE slit	5183-2078	100 pcs
155639	green	Silicone/PTFE slit	5183-2077	100 pcs

XL® SCREW CAPS OPEN TOP

POLYPROPYLENE

CAT.NO.	COLOR	OEM	CASE PACK
155611	blue	5182-0728	100 pcs
155612	red	5182-0726	100 pcs
155614	green	5182-0727	100 pcs

SEPTA

CAT.NO.	DESCRIPTION	OEM	CASE PACK
155617	Rubber/ETFE	5182-0731	100 pcs
155615	Silicone/PTFE	5182-0730	100 pcs
155616	PTFE/Silicone/PTFE	5182-0729	100 pcs
155618	Silicone/PTFE slit	5183-2074	100 pcs

MICROSERT® LIMITED VOLUME INSERTS

For all crimp and screw top vials

CAT.NO.	VOLUME	SIZE	OEM	CASE PACK
150820	300µl	6x30mm	5181-1270	100 pcs
150821	400µl	6x30mm	5181-3377	100 pcs



XL® SCREW VIAL KITS

Kit contains wide opening autosampler vials and screw caps with mounted septa

CAT.NO.	VOL	DESCRIPTION	OEM	CASE PACK
CLEAR GLASS				
154921	2ml	Rubber/ETFE	5182-0553	100 pcs
154920	2ml	Silicone/PTFE	5182-0557	100 pcs
154923	2ml	PTFE/Sili/PTFE	5182-0555	100 pcs
AMBER GLASS				
154940	2ml	Rubber/ETFE	5182-0554	100 pcs
154941	2ml	Silicone/PTFE	5182-0558	100 pcs
154942	2ml	PTFE/Sili/PTFE	5182-0556	100 pcs
VIALS WITH WRITING SPOT				
154945	2ml	Rubber/ETFE	5182-0864	100 pcs
154946	2ml	Silicone/PTFE	5182-0865	100 pcs
154947	2ml	PTFE/Sili/PTFE	5182-0866	100 pcs

WASH VIALS & ACCESSORIES

HP 7673

CAT.NO.	VOLUME	SIZE	OEM	CASE PACK
VIALS & SCREW CAPS				
151182	4ml	15x45mm	9301-0723	100 pcs
DIFFUSION CAPS				
151183			07673-40180	12 pcs
SEPTA				
151184			9301-1031	100 pcs

PLASTIC VIALS WITH GLASS INSERTS

HP 7670/71/72

Vials are made of polypropylene with a borosilicate glass insert mounted

CAT.NO.	VOLUME	SIZE	OEM	CASE PACK
158050	100µl	12x32mm	9301-0977	100 pcs

PLASTIC MICRO VIALS

HP 7670/71/72

These vials are made of non-ionic polypropylene and are chemically inert. They minimize pH changes and ion contamination. They have an internal tapered cone for maximum retrieval of content.

CAT.NO.	VOLUME	SIZE	OEM REF	CASE PACK
158003	300µl	12x32mm	5183-4731	100 pcs



HEADSPACE VIALS BOROSILICATE GLASS

CAT.NO.	VOLUME	SIZE	CASE PACK
151114 OEM- 5182-0876	6ml	22x38mm	100 pcs
151109 OEM- 5182-0838	10ml	23x47mm	100 pcs
151102 OEM- 5182-0837	20ml	23x75mm	100 pcs

ALUMINUM CRIMP SEALS & SEPTA

CAT.NO.	DIAM	DESCRIPTION	CASE PACK
151286 OEM- 5183-4479	20mm	Butyl/PTFE	100 pcs
151287 OEM- 5183-4477	20mm	Silicone/PTFE	100 pcs

PRESSURE RELIEF CRIMP SEALS & SEPTA

Clear lacquered special cap with bridges and scorelines which break at 3 +/-0.5 bar

CAT.NO.	DIAM	DESCRIPTION	CASE PACK
151288 OEM- 5183-4480	20mm	Butyl/PTFE	100 pcs
151289 OEM- 5183-4478	20mm	Silicone/PTFE	100 pcs

ALUMINUM CRIMP SEALS

CAT.NO.	DIAM	DESCRIPTION	CASE PACK
151232 OEM- 9301-0721	20mm	center hole	100 pcs
151233 OEM- 9301-0718	20mm	safety feature	100 pcs

STOPPERS

CAT.NO.	DIAM	DESCRIPTION	CASE PACK
151240 OEM- 5183-4476	20mm	gray butyl	100 pcs

SEPTA

CAT.NO.	DIAM	DESCRIPTION	CASE PACK
151220 OEM- 9301-0976	20mm	Rubber-Butyl/PTFE	100 pcs
151225 OEM- 9301-0719	20mm	Silicone/PTFE	100 pcs



MICRO VIALS

BOROSILICATE GLASS

This limited volume vial has a conical bottom for total downward drainage for maximum retrieval of content. Also available with round bottom for more volume.

CAT.NO.	VOLUME	SIZE	OEM	CASE PACK
151111	200µl	6x32mm	5180-0844	100 pcs
151112	300µl	6x32mm	5180-0841	100 pcs

MINI VIALS

BOROSILICATE GLASS

These round bottom and tapered vials are used with the HP 1050- 34 vial tray only. Use crimp seals or snap caps 8mm.

CAT.NO.	VOLUME	SIZE	OEM	CASE PACK
151142*	700µl	7x30mm	5180-0805	100 pcs
151140*	500µl	7x30mm	5180-0806	100 pcs

* amber glass

VIALSTATION®

ACRYLIC

This heavy acrylic vial rack stands firm on the lab bench. There is sufficient space between the vials which allows crimping. Holds 50 vials.

CAT.NO.	VIALS	OEM	CASE PACK
153500	MICRO	5061-3349	1 each
153507	MINI	5062-2405	1 each

ALUMINUM CRIMP SEALS & SEPTA

For Micro & Mini Vials 151111, 151112, 151140, 151142

CAT.NO.	SIZE	DESCRIPTION	OEM	CASE PACK
151213	8mm	Rubber/ETFE	5180-4489	100 pcs
151256	8mm	Silicone/PTFE	5180-4490	100 pcs
151257	8mm	PTFESili/PTFE	5180-0842	100 pcs

SNAP-ON® CAPS

POLYETHYLENE

CAT.NO.	SIZE	DESCRIPTION	OEM	CASE PACK
153410	8mm	PTFE		100 pcs
153415	8mm	PTFE/Silicone/PTFE		100 pcs
153420	8mm	Silicone/PTFE		100 pcs
153425	8mm	Rubber/ETFE		100 pcs

SNAP CAPS LINERLESS

153430	8mm	molded	5183-4488	100 pcs
--------	-----	--------	-----------	---------



AUTOSAMPLER VIALS

BOROSILICATE GLASS

738 AUTOSAMPLER

use crimp seals or snap caps 11mm

CAT.NO.	VOLUME	SIZE	CAP SIZE	CASE PACK
---------	--------	------	----------	-----------

WIDE OPENING VIALS

151123	1.5 ml	12x32mm	11mm	100 pcs
151124*	1.5 ml	12x32mm	11mm	100 pcs

* amber glass

VIALS WITH WRITING SPOT

151125	1.5ml	12x32mm	11mm	100 pcs
151126*	1.5ml	12x32mm	11mm	100 pcs

*amber glass

ALUMINUM CRIMP SEALS & SEPTA

Available with a variety of different liner materials

- ETFE-faced natural rubber for routine analysis
- PTFE-faced silicone rubber provides excellent resealing
- PTFE-silicone-PTFE reduces coring problems
- Butyl/PTFE-faced liner for long term storage

CAT.NO.	SIZE	TYPE	CASE PACK
---------	------	------	-----------

151216	11mm	Rubber/ETFE	100 pcs
151266	11mm	Silicone/PTFE	100 pcs
151267	11mm	PTFE/Silicone/PTFE	100 pcs
151269	11mm	Butyl/PTFE	100 pcs

SNAP-ON® CAPS

POLYETHYLENE

Natural colored snap caps 11mm

CAT.NO.	SIZE	DESCRIPTION	CASE PACK
---------	------	-------------	-----------

153310	11mm	PTFE	100 pcs
153315	11mm	PTFE/Silicone/PTFE	100 pcs
153320	11mm	Silicone/PTFE	100 pcs
153325	11mm	Rubber/ETFE	100 pcs

SNAP CAPS LINERLESS

153330	11mm	molded	100 pcs
--------	------	--------	---------



AUTOSAMPLER VIALS

BOROSILICATE GLASS

738 AUTOSAMPLER

for use with screw caps 8-425

CAT.NO.	VOLUME	SIZE	CAP SIZE	CASE PACK
---------	--------	------	----------	-----------

STANDARD VIALS

150640	1.5ml	12x32mm	8-425	100 pcs
150641*	1.5ml	12x32mm	8-425	100 pcs

* amber glass

WIDE OPENING VIALS

155600	1.5ml	12x32mm	9-425	100 pcs
155601*	1.5ml	12x32mm	9-425	100 pcs

* amber glass

SCREW CAPS OPEN TOP

POLYPROPYLENE

CAT.NO.	SIZE	CASE PACK
---------	------	-----------

150601	8-425	100 pcs
155610	9-425	100 pcs

SEPTA

CAT.NO.	DIAM	TYPE	CASE PACK
---------	------	------	-----------

150603	8mm	Butyl/PTFE	100 pcs
150604	8mm	Silicone/PTFE	100 pcs
150605	8mm	PTFE	100 pcs
155617	9mm	Butyl/PTFE	100 pcs
155615	9mm	Silicone/PTFE	100 pcs
155619	9mm	PTFE	100 pcs

SCREW CAPS WITH MOUNTED SEPTA

POLYPROPYLENE

Screw caps with mounted septa ready for use

CAT.NO.	SIZE	TYPE	CASE PACK
---------	------	------	-----------

150650	8-425	Silicone/PTFE	100 pcs
150651	8-425	Rubber/ETFE	100 pcs
150652	8-425	PTFE/Silicone/PTFE	100 pcs
155620	9-425	Silicone/PTFE	100 pcs
155630	9-425	Rubber/ETFE	100 pcs
155625	9-425	PTFE/Silicone/PTFE	100 pcs

MICROSERT® LIMITED VOLUME INSERTS

BOROSILICATE GLASS

CAT.NO.	VOLUME	SIZE	VIALS	CASE PACK
---------	--------	------	-------	-----------

150610	100µl	5x30mm	150640/150641	100 pcs
150820	300µl	6x30mm	155600/155601	100 pcs



AUTOSAMPLER VIALS

BOROSILICATE GLASS

708AL, 725, 728 AUTOSAMPLERS

These positive displacement vials (PDV) and cap is an active design component to displace the sample from the vial into the injection loop.

Vials are complete with natural colored caps

CAT.NO.	VOLUME	SIZE	OEM	CASE PACK
155200	0.9ml	8x35mm	61601/01	250 pcs
155201*	0.9ml	8x35mm	61600/01	250 pcs

* amber glass

PLASTIC VIALS

POLYPROPYLENE

These vials are precision injection-molded. Polypropylene provides safety from breakage and dimension tolerance reliability for capping and instrumentation use. These vials are non-ionic, minimizing pH changes and ion contamination

Vials are complete with natural colored caps

CAT.NO.	VOLUME	SIZE	OEM	CASE PACK
POLYPROPYLENE				
155203	0.9ml	8x35mm	61604/00	250 pcs
TOPAS®				
155204	0.9ml	8x35mm		250 pcs

CAPS

POLYETHYLENE

For vials 155200, 155201, 155203 & 155204

CAT.NO.	COLOR	OEM	CASE PACK
155205	natural	61608/01	250 pcs
155206	blue	61608/03	250 pcs
155207	red	61608/02	250 pcs
155208	yellow	61608/05	250 pcs
155209	green	61608/04	250 pcs

VIALKITS

These kitpacks include both vials and natural colored caps

CAT.NO.	TYPE	OEM	CASE PACK
155210	clear glass	61601/00	1000 pcs
155215	amber glass	61600/00	1000 pcs
155220	polypropylene		1000 pcs
155225	TOPAS®		1000 pcs



AUTOSAMPLER VIALS

BOROSILICATE GLASS

BECKMAN 502, 507, SYSTEM GOLD® HPLC

The 502 autosampler has a 92 vial capacity with 4 additional vials reserved for needle wash. An optional large sample vial kit holds 48 vials with a capacity of 4ml for semi-preparative applications and increases the maximum injection volume to 2ml.

CAT.NO.	SIZE	CAP SIZE	CASE PACK
150640	12x32mm	8-425	100 pcs
150641*	12x32mm	8-425	100 pcs

* amber glass

SCREW CAPS OPEN TOP

POLYPROPYLENE

CAT.NO.	COLOR	CAP SIZE	CASE PACK
150601	black	8-425	100 pcs
150601R	red	8-425	100 pcs
150601B	blue	8-425	100 pcs
150601Y	yellow	8-425	100 pcs
150601G	green	8-425	100 pcs

SEPTA

CAT.NO.	DIAM	DESCRIPTION	CASE PACK
150603	8mm	Butyl/PTFE	100 pcs
150604	8mm	Silicone/PTFE	100 pcs

AUTOSAMPLER VIALS

BOROSILICATE GLASS

BECKMAN 504

CAT.NO.	SIZE	CAP SIZE	CASE PACK
152601	7x40mm	8mm	100 pcs
152611*	7x40mm	8mm	100 pcs

* amber glass

ALUMINUM CRIMP SEALS & SEPTA

CAT.NO.	SIZE	DESCRIPTION	CASE PACK
151213	8mm	Rubber/ETFE	100 pcs
151256	8mm	Silicone/PTFE	100 pcs

SNAP-ON® CAPS

POLYETHYLENE

Natural colored snap caps 8mm for vials 152601 & 152611

CAT.NO.	SIZE	DESCRIPTION	CASE PACK
153425	8mm	Rubber/ETFE	100 pcs
153420	8mm	Silicone/PTFE	100 pcs

SNAP CAPS LINERLESS

153430	8mm	molded 0.25mm	100 pcs
--------	-----	---------------	---------



AUTOSAMPLER VIALS

BOROSILICATE GLASS

P/ACE SYSTEM

CAT.NO.	SIZE	CAP SIZE	OEM	CASE PACK
150745	15x45mm	13-425	358807	100 pcs
150746*	15x45mm	13-425		100 pcs

*amber glass

SCREW CAPS OPEN TOP

PHENOLIC

CAT.NO.	DIAM	CASE PACK
150701	13-425	100 pcs

SEPTA

CAT.NO.	DIAM	DESCRIPTION	CASE PACK
150703	12mm	Butyl/PTFE	100 pcs
150704	12mm	Silicone/PTFE	100 pcs

MICROSERT® LIMITED VOLUME INSERTS

BOROSILICATE GLASS

CAT.NO.	VOLUME	SIZE	CASE PACK
150710	300µL	6 x 40mm	100 pcs

Compression springs 155315 needed for support

COMPRESSION SPRINGS

STAINLESS STEEL

CAT.NO.	CASE PACK
150715	100 pcs



AUTOSAMPLER VIALS

BOROSILICATE GLASS

Use crimp seals or snap caps 13mm

CAT.NO.	VOLUME	SIZE	CAP SIZE	CASE PACK
158100	4ml	15x45mm	13mm	100 pcs
158101*	4ml	15x45mm	13mm	100 pcs

* amber glass

SNAP-ON® CAPS

POLYETHYLENE

Natural color snap caps 13mm

CAT.NO.	DESCRIPTION	CASE PACK
158120	Silicone/PTFE	100 pcs
158125	Rubber/ETFE	100 pcs
158135	Silicone/PTFE single slit	100 pcs
158140	Silicone/PTFE cross slit	100 pcs
158145	Silicone/PTFE star slit	100 pcs



AUTOSAMPLER VIALS

BOROSILICATE GLASS

CAT.NO.	SIZE	CAP SIZE	CASE PACK
151805	16x61mm	15-425	100 pcs
151806*	16x61mm	15-425	100 pcs

* amber glass

SCREW CAPS

PHENOLIC

CAT.NO.	DIAM	DESCRIPTION	CASE PACK
151810	15-425	Open Top	100 pcs
151811	15-425	Solid Top	100 pcs

LINERS

CAT.NO.	DIAM	DESCRIPTION	CASE PACK
151815	13mm	Silicone/PTFE single slit	100 pcs
151816	13mm	Silicone/PTFE	100 pcs
151820	10mm	Silicone/PTFE	100 pcs

SCREW CAPS WITH LINERS

PHENOLIC

Screw caps solid top with mounted liners

CAT.NO.	DIAM	SEPTA	CASE PACK
150922	15-425	SBR	100 pcs
150932	15-425	Butyl/PTFE	100 pcs
150942	15-425	Cork/PTFE	100 pcs

SBR- Styrene Butadiene Rubber



AUTOSAMPLER VIALS

BOROSILICATE GLASS

CMA-250/200

use crimp seals or snap caps

CAT.NO.	VOLUME	SIZE	TYPE	CASE PACK
151112	0.3ml	6x32mm	round	100 pcs
151111	0.2ml	6x32mm	conical	100 pcs

ALUMINUM CRIMP SEALS & SEPTA

For vials with either 8 or 11mm crimp neck

CAT.NO.	DIAM	DESCRIPTION	CASE PACK
152651	8mm	Silicone/PTFE	100 pcs
151213	8mm	Rubber/PTFE	100 pcs

SNAP-ON® CAPS

POLYETHYLENE

Natural colored snap caps for vials with either 8 or 11mm crimp neck

CAT.NO.	SIZE	DESCRIPTION	CASE PACK
153410	8mm	PTFE Septa	100 pcs
153415	8mm	PTFE/Silicone/PTFE	100 pcs
153420	8mm	Silicone/PTFE	100 pcs
153425	8mm	Rubber/ETFE	100 pcs

SNAP CAPS LINERLESS

153430	8mm	molded 0.25mm	100 pcs
--------	-----	---------------	---------



HEADSPACE VIALS

BOROSILICATE GLASS

COMBI PAL

All vials have a strengthened base with a specific radius design which will withstand internal pressures during analysis

CAT.NO.	VOLUME	SIZE	CASE PACK
157100	10ml	22x46mm	100 pcs
157101*	10ml	22x46mm	100 pcs
157102	20ml	22x75mm	100 pcs
157103*	20ml	22x75mm	100 pcs

* amber glass

BI-METAL® CRIMP SEALS & SEPTA

For COMBI PAL autosamplers only

These crimp seals solve all the problems incurred with the present steel caps available that are very hard to crimp and decrimp. They are made of aluminum for easy crimping and have a tin center so that the robot magnet can pick up the vial for transport.

The hole diameter of 8mm is suitable for SPME use

CAT.NO.	DIAM	DESCRIPTION	CASE PACK
RED CRIMP SEALS			
157115	20mm	Butyl/PTFE	100 pcs
157116	20mm	blue Silicone/PTFE	100 pcs
157117	20mm	red Silicone/PTFE	100 pcs
BLUE CRIMP SEALS			
157120	20mm	Butyl/PTFE	100 pcs
157121	20mm	blue Silicone/PTFE	100 pcs
157122	20mm	red Silicone/PTFE	100 pcs
GREEN CRIMP SEALS			
157125	20mm	Butyl/PTFE	100 pcs
157126	20mm	blue Silicone/PTFE	100 pcs
157127	20mm	red Silicone/PTFE	100 pcs
GOLD CRIMP SEALS			
157130	20mm	Butyl/PTFE	100 pcs
157131	20mm	blue Silicone/PTFE	100 pcs
157132	20mm	red Silicone/PTFE	100 pcs
SILVER CRIMP SEALS			
157130	20mm	Butyl/PTFE	100 pcs
157131	20mm	blue Silicone/PTFE	100 pcs
157132	20mm	red Silicone/PTFE	100 pcs
GOLD-SILVER CRIMP SEALS with 5.5mm hole			
For use with smaller magnet that is used for 11mm steel seals			
157140	20mm	Butyl/PTFE	100 pcs
157141	20mm	blue Silicone/PTFE	100 pcs
157142	20mm	red Silicone/PTFE	100 pcs

TEMPERATURE RANGE:

Butyl/PTFE	140°C
blue silicone/PTFE	200°C
red silicone/PTFE	250°C

BI-METAL® CRIMP SEALS ARE PATENT PENDING



AUTOSAMPLER VIALS

BOROSILICATE GLASS

WIDE OPENING VIALS

Use crimp seals or snap caps 11mm

CAT.NO.	VOLUME	SIZE	CAP SIZE	CASE PACK
151123	1.5ml	12x32mm	11mm	100 pcs
151124*	1.5ml	12x32mm	11mm	100 pcs

* amber glass

VIALS WITH WRITING SPOT

151125	1.5ml	12x32mm	11mm	100 pcs
151126*	1.5ml	12x32mm	11mm	100 pcs

* amber glass

STEEL CRIMP SEALS & SEPTA

These steel crimp seals were designed for use in the CTC Combi PAL Autosampler. They can be picked up by the robot magnet to transport the vials

CAT.NO.	SIZE	TYPE	CASE PACK
---------	------	------	-----------

SILVER STEEL SEALS

157150	11mm	ETFE/Rubber	100 pcs
157151	11mm	PTFE/Silicone	100 pcs
157152	11mm	PTFE/Silicone/PTFE	100 pcs
157153	11mm	Butyl/PTFE	100 pcs

BLACK STEEL SEALS

157155	11mm	ETFE/Rubber	100 pcs
157156	11mm	PTFE/Silicone	100 pcs
157157	11mm	PTFE/Silicone/PTFE	100 pcs
157158	11mm	Butyl/PTFE	100 pcs

ALUMINUM CRIMP SEALS & SEPTA

- ETFE-faced natural rubber for routine analysis
- PTFE-faced silicone rubber provides excellent resealing
- PTFE/silicone/PTFE reduces coring problems
- Butyl/PTFE-faced liner for long term storage

CAT.NO.	SIZE	TYPE	CASE PACK
151216	11mm	ETFE/Rubber	100 pcs
151266	11mm	PTFE/Silicone	100 pcs
151267	11mm	PTFE/Silicone/PTFE	100 pcs
151269	11mm	Butyl/PTFE	100 pcs

SNAP-ON® CAPS

POLYETHYLENE

Natural colored snap caps 11mm

CAT.NO.	DESCRIPTION	CASE PACK
153310	PTFE	100 pcs
153315	PTFE/Silicone/PTFE	100 pcs
153320	Silicone/PTFE	100 pcs
153325	Rubber/ETFE	100 pcs



HEADSPACE VIALS

BOROSILICATE GLASS

HSS 89.50, HSS 39.50

for use with crimp seals 20mm

CAT.NO.	VOLUME	SIZE	CAP SIZE	CASE PACK
152800	20ml	22x75mm	20mm	100 pcs
152810	10ml	22x46mm	20mm	100 pcs

ALUMINUM CRIMP SEALS & SEPTA'

Can be punctured many times and reseals instantly puncture after puncture. Silicone compound used is designed for coring resistance and sealability.

CAT.NO.	DIAM	DESCRIPTION	CASE PACK
152801	20mm	Silicone/PTFE	100 pcs
152802	20mm	Butyl/PTFE	100 pcs
152803	20mm	Rubber	100 pcs

PRESSURE RELIEF CRIMP SEALS & SEPTA

Clear lacquered, special cap with bridges and scorelines which break at 3 +/- 0.5 bar.

CAT.NO.	DIAM	DESCRIPTION	CASE PACK
152804	20mm	Butyl/PTFE	100 pcs
152805	20mm	Silicone/PTFE	100 pcs



AUTOSAMPLER VIALS

BOROSILICATE GLASS

ALS 39.80 & ALS 86.80

Use crimp seals or snap caps 11mm

CAT.NO.	VOLUME	SIZE	CAP SIZE	CASE PACK
STANDARD VIALS				
151120	1.5ml	12x32mm	11mm	100 pcs
151121*	1.5ml	12x32mm	11mm	100 pcs

WIDE OPENING VIALS

151123	1.5ml	12x32mm	11mm	100 pcs
151124*	1.5ml	12x32mm	11mm	100 pcs

VIALS WITH WRITING SPOT

151125	1.5ml	12x32mm	11mm	100 pcs
151126*	1.5ml	12x32mm	11mm	100 pcs

*amber glass

ALUMINUM CRIMP SEALS & SEPTA

CAT.NO.	DIAM	DESCRIPTION	CASE PACK
151216	11mm	Rubber/ETFE	100 pcs
151266	11mm	Silicone/PTFE	100 pcs
151267	11mm	PTFE/Silicone/PTFE	100 pcs
151269	11mm	Butyl/PTFE	100 pcs

SNAP-ON® CAPS

POLYETHYLENE

Natural colored snap caps 11mm

CAT.NO.	DESCRIPTION	CASE PACK
153310	PTFE	100 pcs
153315	PTFE/Silicone/PTFE	100 pcs
153320	Silicone/PTFE	100 pcs
153325	Rubber/ETFE	100 pcs

SNAP CAPS LINERLESS

153330	molded 0.25mm	100 pcs
--------	---------------	---------

MICROSERT® LIMITED VOLUME INSERTS

BOROSILICATE GLASS

Inserts 150613 requires compression spring 150614 for support.

CAT.NO.	VOLUME	SIZE	VIALS	CASE PACK
150613*	50µl	4x27mm	151120	100 pcs
150610	100µl	5x30mm	151120	100 pcs
150820	300µl	6x30mm	151123	100 pcs

*compression spring needed for support

COMPRESSION SPRINGS

STAINLESS STEEL

CAT.NO.	LENGTH	DIAM	INSERTS	CASE PACK
150614	37mm	5mm	4x27mm	100 pcs



AUTOSAMPLER VIALS

BOROSILICATE GLASS

ASE 200

CAT.NO.	VOLUME	SIZE	OEM	CASE PACK
151910	40ml	27x 95	49465	100 pcs
151911	40ml*	27x 95		100 pcs
151912	60ml	27x140	49466	100 pcs
151913	60ml*	27x140		100 pcs

* amber glass

SCREW CAPS OPEN TOP

PHENOLIC

CAT.NO.	COLOR	SIZE	CASE PACK
151902	black	24-400	100 pcs
151905	white	24-400	100 pcs

SEPTUM LINERS

CAT.NO.	TYPE	THICKNESS	CASE PACK
151906	Silicone/PTFE	1.5mm	100 pcs
151907	Silicone/PTFE	2.0mm	100 pcs
151908	Silicone/PTFE	3.0mm	100 pcs

AUTOSAMPLER VIALS

BOROSILICATE GLASS

AS 50- AUTOSELECT

CAT.NO.	VOLUME	SIZE	CAPS	CASE PACK
151123	1.5ml	12x32	11mm	100 pcs
151107	10.0ml	22x46	20mm	100 pcs

ALUMINUM CRIMP SEALS & SEPTA

CAT.NO.	DIAM	DESCRIPTION	CASE PACK
151266	11mm	Silicone/PTFE	100 pcs
151286	20mm	Butyl/PTFE	100 pcs
151287	20mm	Silicone/PTFE	100 pcs

SNAP-ON® CAPS

POLYETHYLENE

Natural colored snap caps 11mm

CAT.NO.	SIZE	DESCRIPTION	CASE PACK
153310	11mm	PTFE	100 pcs
153320	11mm	Silicone/PTFE	100 pcs
153325	11mm	Rubber/ETFE	100 pcs

MICROSERT® LIMITED VOLUME INSERTS

BOROSILICATE GLASS

CAT.NO.	VOLUME	SIZE	VIALS	CASE PACK
150820	300µl	6x30mm	151123	100 pcs



AUTOSAMPLER VIALS

BOROSILICATE GLASS

Use with screw caps 13-425

CAT.NO.	SIZE	CAP SIZE	CASE PACK
152200	13x63mm	13-425	100 pcs

SCREW CAPS OPEN TOP

PHENOLIC

CAT.NO.	SIZE	CASE PACK
152201	13-425	100 pcs

SEPTA

CAT.NO.	DIAM	DESCRIPTION	CASE PACK
152203	12mm	Butyl/PTFE	100 pcs
152204	12mm	Silicone/PTFE	100 pcs
152206	12mm	Rubber/ETFE	100 pcs

TEFLON[®] SEPTA

CAT.NO.	DIAM	THICKNESS	CASE PACK
152205	12mm	0.25mm	1000 pcs

SCREW CAPS WITH SEPTA MOUNTED

CAT.NO.	DIAM	DESCRIPTION	CASE PACK
152210	12mm	Butyl/PTFE	100 pcs
152211	12mm	Silicone/PTFE	100 pcs
152212	12mm	Rubber/ETFE	100 pcs



AUTOSAMPLER VIALS

BOROSILICATE GLASS

CE- AS200

Use crimp seals or snap caps 8mm

CAT.NO	VOLUME	SIZE	CAP SIZE	CASE PACK
--------	--------	------	----------	-----------

CLEAR GLASS

152600*	0.8ml	7x40mm	8mm	100 pcs
152610**	0.7ml	7x40mm	8mm	100 pcs

AMBER GLASS

152601*	0.8ml	7x40mm	8mm	100 pcs
152611**	0.7ml	7x40mm	8mm	100 pcs

* flat bottom, clear glass

** conical bottom, amber glass

CARLO ERBA 60 VIAL TRAY

Use crimp seals or snap caps 8mm

CAT.NO.	VOLUME	SIZE	CAP SIZE	CASE PACK
---------	--------	------	----------	-----------

151100	0.8ml	8x30mm	8mm	200 pcs
151106*	0.8ml	8x30mm	8mm	200 pcs
151140*	0.5ml	7x30mm	8mm	100 pcs

* amber glass

ALUMINUM CRIMP SEALS & SEPTA

For all vials with 8mm crimp neck

CAT.NO.	SIZE	DESCRIPTION	CASE PACK
---------	------	-------------	-----------

151213	8mm	Rubber/ETFE	100 pcs
151256	8mm	Silicone/PTFE	100 pcs
151257	8mm	PTFE/Silicone/PTFE	100 pcs

SNAP-ON® CAPS

POLYETHYLENE

Natural color snap caps 8mm

CAT.NO.	SIZE	DESCRIPTION	CASE PACK
---------	------	-------------	-----------

153410	8mm	PTFE	100 pcs
153415	8mm	PTFE/Silicone/PTFE	100 pcs
153420	8mm	Silicone/PTFE	100 pcs
153425	8mm	Rubber/ETFE	100 pcs

SNAP CAPS LINERLESS

153430	8mm	molded 0.25mm	100 pcs
--------	-----	---------------	---------

AUTOSAMPLER VIALS

BOROSILICATE GLASS

CE-8000

For use with crimp seals or snap caps 8mm

CAT.NO.	VOLUME	SIZE	TYPE	CASE PACK
---------	--------	------	------	-----------

151112	0.3ml	6x32mm	round	100 pcs
151111	0.2ml	6x32mm	conical	100 pcs



AUTOSAMPLER VIALS

BOROSILICATE GLASS

CE-42 & 105 VIAL TRAY/ AS-800

Use crimp seals or snap caps 11mm

CAT.NO.	VOLUME	SIZE	CAP SIZE	CASE PACK
---------	--------	------	----------	-----------

STANDARD VIALS

151120	2ml	12x32mm	11mm	100 pcs
151121*	2ml	12x32mm	11mm	100 pcs

WIDE OPENING VIALS

151123	1.5ml	12x32mm	11mm	100 pcs
151124*	1.5ml	12x32mm	11mm	100 pcs

VIALS WITH WRITING SPOT

151125	1.5ml	12x32mm	11mm	100 pcs
151126*	1.5ml	12x32mm	11mm	100 pcs

* amber glass

ALUMINUM CRIMP SEALS & SEPTA

CAT.NO.	SIZE	DESCRIPTION	CASE PACK
---------	------	-------------	-----------

151216	11mm	Rubber/ETFE	100 pcs
151266	11mm	Silicone/PTFE	100 pcs
151267	11mm	PTFE/Silicone/PTFE	100 pcs
151269	11mm	Butyl/PTFE	100 pcs

SNAP-ON® CAPS

POLYETHYLENE

Natural colored snap caps 11mm

CAT.NO.	SIZE	DESCRIPTION	CASE PACK
---------	------	-------------	-----------

153310	11mm	PTFE	100 pcs
153315	11mm	PTFE/Silicone/PTFE	100 pcs
153320	11mm	Silicone/PTFE	100 pcs
153325	11mm	Rubber/ETFE	100 pcs

SNAP CAPS LINERLESS

153330	11mm	molded 0.25mm	100 pcs
--------	------	---------------	---------

MICROSERT® LIMITED VOLUME INSERTS

BOROSILICATE GLASS

These conical inserts will fit precisely into all of our vials. Inserts 150613 require a compression spring 150614 for support.

CAT.NO.	VOLUME	SIZE	VIALS	CASE PACK
---------	--------	------	-------	-----------

150613*	50µl	4x27mm	151120	100 pcs
150610	100µl	5x30mm	151120	100 pcs
150820	300µl	6x30mm	151123	100 pcs

* compression springs 150614 needed for support

COMPRESSION SPRINGS

STAINLESS STEEL

CAT.NO.	LENGTH	DIAM	INSERTS	CASE PACK
---------	--------	------	---------	-----------

150614	37mm	5mm	4x27mm	100 pcs
--------	------	-----	--------	---------



AUTOSAMPLER VIALS

BOROSILICATE GLASS

CE-8000

Use screw caps 8-425

CAT.NO.	VOLUME	SIZE	CAP SIZE	CASE PACK
---------	--------	------	----------	-----------

GLASS

150640	1.5ml	12x32mm	8-425	100 pcs
150641*	1.5ml	12x32mm	8-425	100 pcs

* amber glass

SCREW CAPS OPEN TOP

POLYPROPYLENE

CAT.NO.	CAP SIZE	CASE PACK
---------	----------	-----------

150601	8-425	100 pcs
--------	-------	---------

TEFLON[®] SEPTA

For screw caps 150601

CAT.NO.	DIAM	THICKNESS	CAP SIZE	CASE PACK
---------	------	-----------	----------	-----------

150605	8mm	0.25mm	8-425	1000 pcs
--------	-----	--------	-------	----------

SEPTA

For screw caps 150601

CAT.NO.	SEPTA	DESCRIPTION	CASE PACK
---------	-------	-------------	-----------

150603	8mm	Butyl/PTFE	100 pcs
150604	8mm	Silicone/PTFE	100 pcs
150606	8mm	Rubber/ETFE	100 pcs

MICROSERT[®] LIMITED VOLUME INSERTS

BOROSILICATE GLASS

These conical inserts will fit precisely into all of our vials. Inserts 150613 require a compression spring 150614 for support.

CAT.NO.	VOLUME	SIZE	CASE PACK
---------	--------	------	-----------

150613*	50µl	4x27mm	100 pcs
150610	100µl	5x30mm	100 pcs

* compression springs 150614 needed for support

COMPRESSION SPRINGS

STAINLESS STEEL

CAT.NO.	LENGTH	DIAM	INSERTS	CASE PACK
---------	--------	------	---------	-----------

150614	37mm	5mm	4x27mm	100 pcs
--------	------	-----	--------	---------



AUTOSAMPLER VIALS

BOROSILICATE GLASS

L-7200, L-7250, AS 2000, AS 4000

For use with screw caps

CAT.NO.	VOLUME	SIZE	CAP SIZE	CASE PACK
150640	1.5ml	12x32mm	8-425	100 pcs
150641*	1.5ml	12x32mm	8-425	100 pcs

* amber glass

SCREW CAPS OPEN TOP

POLYPROPYLENE

CAT.NO.	CAP SIZE	CASE PACK
150601	8-425	100 pcs

TEFLON® SEPTA

CAT.NO.	DIAM	THICKNESS	CASE PACK
150605	8mm	0.25mm	1000 pcs

PRE-CUT SEPTUM LINERS

Liners are pre-cut for easy needle penetration.

CAT.NO.	DIAM	DESCRIPTION	CASE PACK
150608	8mm	Silicone/PTFE single slit	100 pcs
150618	8mm	Silicone/PTFE cross slit	100 pcs
150619	8mm	Silicone/PTFE star slit	100 pcs

SEPTA

CAT.NO.	DIAM	DESCRIPTION	CASE PACK
150604	8mm	Silicone/PTFE	100 pcs
150603	8mm	Butyl/PTFE	100 pcs
150606	8mm	Rubber/ETFE	100 pcs

MICROSERT® LIMITED VOLUME INSERTS

BOROSILICATE GLASS

Conical bottom provide total downward drainage for maximum retrieval of contents by syringe, reducing the volume of sample needed.

INSERTS for AS 2000, AS 4000

CAT.NO.	VOLUME	SIZE	CASE PACK
150613*	50µl	4x27mm	100 pcs
150610	100µl	5x30mm	100 pcs

* compression springs 150614 needed for support

COMPRESSION SPRINGS

STAINLESS STEEL

CAT.NO.	INSERTS	CASE PACK
150614	4x27mm	100 pcs



AUTOSAMPLER VIAL

BOROSILICATE GLASS

L-7200, L-7250, AS 2000, AS 4000

Use crimp seals or snap caps 11mm

CAT.NO.	VOLUME	SIZE	CAP SIZE	CASE PACK
---------	--------	------	----------	-----------

STANDARD VIALS

151120	1.5ml	12x32mm	11mm	100 pcs
151121*	1.5ml	12x32mm	11mm	100 pcs

WIDE OPENING VIALS

151123	1.5ml	12x32mm	11mm	100 pcs
151124*	1.5ml	12x32mm	11mm	100 pcs

VIALS WITH WRITING SPOT

151125	1.5ml	12x32mm	11mm	100 pcs
151126*	1.5ml	12x32mm	11mm	100 pcs

* amber glass

ALUMINUM CRIMP SEALS & SEPTA

CAT.NO.	DIAM	DESCRIPTION	CASE PACK
---------	------	-------------	-----------

151216	11mm	Rubber/ETFE	100 pcs
151266	11mm	Silicone/PTFE	100 pcs
151269	11mm	Butyl/PTFE	100 pcs

SNAP-ON® CAPS

POLYETHYLENE

Natural colored snap caps 11mm

CAT.NO.	DIAM	DESCRIPTION	CASE PACK
---------	------	-------------	-----------

153310	11mm	PTFE	100 pcs
153320	11mm	Silicone/PTFE	100 pcs
153335	11mm	Silicone/PTFE single slit	100 pcs

SNAP CAPS LINERLESS

153330	molded 0.25mm		100 pcs
--------	---------------	--	---------

MICROSERT® LIMITED VOLUME INSERTS

BOROSILICATE GLASS

These conical inserts will fit precisely into all of our vials. Inserts 150613 require compression spring 150614 for support.

CAT.NO.	VOLUME	SIZE	FOR VIALS	CASE PACK
---------	--------	------	-----------	-----------

150613*	50µl	4x27mm	151120	100 pcs
150610	100µl	5x30mm	151120	100 pcs
150820	300µl	6x30mm	151123	100 pcs

* compression springs 150614 needed for support

COMPRESSION SPRINGS

STAINLESS STEEL

CAT.NO.	INSERTS	CASE PACK
---------	---------	-----------

150614	4x27mm	100 pcs
--------	--------	---------



AUTOSAMPLER VIALS

BOROSILICATE GLASS

LC 1600

For use with crimp seals or snap caps 11mm

CAT.NO.	VOLUME	SIZE	CAP SIZE	CASE PACK
---------	--------	------	----------	-----------

WIDE OPENING VIALS

152300	2.5ml	12x40mm	11mm	100 pcs
152301*	2.5ml	12x40mm	11mm	100 pcs

* amber glass

ALUMINUM CRIMP SEALS & SEPTA

Available with a variety of different liner materials.

- ETFE-faced natural rubber for routine analysis
- PTFE-faced silicone rubber provides excellent resealing
- PTFE-silicone-PTFE reduces coring problems
- Butyl/PTFE-faced liner for long term storage

CAT.NO.	SIZE	TYPE	CASE PACK
---------	------	------	-----------

151216	11mm	Rubber/ETFE	100 pcs
151266	11mm	Silicone/PTFE	100 pcs
151267	11mm	PTFE/Silicone/PTFE	100 pcs
151269	11mm	Butyl/PTFE	100 pcs

SNAP-ON[®] CAPS

POLYETHYLENE

Natural colored snap caps 11mm

CAT.NO.	SIZE	DESCRIPTION	CASE PACK
---------	------	-------------	-----------

153310	11mm	PTFE	100 pcs
153315	11mm	PTFE/Silicone/PTFE	100 pcs
153320	11mm	Silicone/PTFE	100 pcs
153325	11mm	Rubber/ETFE	100 pcs

SNAP CAPS LINERLESS

153330	11mm	molded	100 pcs
--------	------	--------	---------

MICROSERT[®] LIMITED VOLUME INSERTS

BOROSILICATE GLASS

CAT.NO.	VOLUME	SIZE	CASE PACK
---------	--------	------	-----------

152310	300µl	6x35mm	100 pcs
--------	-------	--------	---------

* compression springs 152315 needed for support and to raise vial for a perfect seal

COMPRESSION SPRINGS

STAINLESS STEEL

CAT.NO.	CASE PACK
---------	-----------

152315	100 pcs
--------	---------



AUTOSAMPLER VIALS

BOROSILICATE GLASS

AS-851/AS-950/AS-1550/AS-1555/AS-1555-10

For use with screw caps 8-425

CAT.NO.	VOLUME	SIZE	CAP SIZE	CASE PACK
---------	--------	------	----------	-----------

STANDARD VIALS

150640	1.5ml	12x32mm	8-425	100 pcs
150641*	1.5ml	12x32mm	8-425	100 pcs

SCREW CAPS OPEN TOP

POLYPROPYLENE

CAT.NO.	COLOR	CAP SIZE	CASE PACK
---------	-------	----------	-----------

150601	black	8-425	100 pcs
--------	-------	-------	---------

TEFLON[®] SEPTA

CAT.NO.	DIAM	THICK	CASE PACK
---------	------	-------	-----------

150605	8mm	0.25mm	1000 pcs
--------	-----	--------	----------

SEPTA

CAT.NO.	DIAM	DESCRIPTION	CASE PACK
---------	------	-------------	-----------

150603	8mm	Butyl/PTFE	100 pcs
150604	8mm	Silicone/PTFE	100 pcs
150606	8mm	Rubber/ETFE	100 pcs

MICROSERT[®] LIMITED VOLUME INSERTS

These conical inserts will fit precisely into all of our vials. Inserts 150613 require compression spring 150614 for support.

CAT.NO.	VOLUME	SIZE	CASE PACK
---------	--------	------	-----------

150613*	50µl	4x27mm	100 pcs
150610	100µl	5x30mm	100 pcs

* compression springs 150614 needed for support

COMPRESSION SPRINGS

STAINLESS STEEL

CAT.NO.	INSERTS	CASE PACK
---------	---------	-----------

150614	4x27mm	100 pcs
--------	--------	---------



AUTOSAMPLER VIALS

BOROSILICATE GLASS

AS-851/AS-950/AS-1550/AS-1555/AS-1555-10

Use crimp seals or snap caps 11mm

CAT.NO.	VOLUME	SIZE	CAP SIZE	CASE PACK
---------	--------	------	----------	-----------

WIDE OPENING VIALS

151123	1.5ml	12x32mm	11mm	100 pcs
151124*	1.5ml	12x32mm	11mm	100 pcs

VIALS WITH WRITING SPOT

151125	1.5ml	12x32mm	11mm	100 pcs
151126*	1.5ml	12x32mm	11mm	100 pcs

* amber glass

ALUMINUM CRIMP SEALS & SEPTA

Available with a variety of different liner materials

- ETFE-faced natural rubber for routine analysis
- PTFE-faced silicone rubber provides excellent resealing
- PTFE/silicone/PTFE reduces coring problems
- Butyl/PTFE-faced liner for long term storage

CAT.NO.	SIZE	DESCRIPTION	CASE PACK
---------	------	-------------	-----------

151216	11mm	Rubber/ETFE	100 pcs
151266	11mm	Silicone/PTFE	100 pcs
151267	11mm	PTFE/Silicone/PTFE	100 pcs
151269	11mm	Butyl/PTFE	100 pcs

SNAP-ON® CAPS

POLYETHYLENE

Natural colored snap caps 11mm

CAT.NO.	SIZE	DESCRIPTION	CASE PACK
---------	------	-------------	-----------

153310	11mm	PTFE	100 pcs
153315	11mm	PTFE/Silicone/PTFE	100 pcs
153320	11mm	Silicone/PTFE	100 pcs
153325	11mm	Rubber/ETFE	100 pcs

SNAP CAPS LINERLESS

153330	11mm	molded	100 pcs
--------	------	--------	---------

MICROSERT® LIMITED VOLUME INSERTS

BOROSILICATE GLASS

CAT.NO.	VOLUME	SIZE	CASE PACK
---------	--------	------	-----------

150820	300µl	6x30mm	100 pcs
--------	-------	--------	---------



MICRO VIALS

BOROSILICATE GLASS

AS-1550/AS-1555/AS-1555-10

This limited volume vial has a conical bottom for total downward drainage for maximum retrieval of contents. Also available with round bottom for more volume.

CAT.NO.	VOLUME	SIZE	TYPE	CASE PACK
151111	200µl	6x32mm	conical	100 pcs
151112	300µl	6x32mm	round	100 pcs
151140*	600µl	7x32mm	conical	100 pcs

* amber glass

ALUMINUM CRIMP SEALS & SEPTA

For Micro Vials 151111, 151112 & 151140

CAT.NO.	SIZE	DESCRIPTION	CASE PACK
151213	8mm	Rubber/ETFE	100 pcs
151256	8mm	Silicone/PTFE	100 pcs
151257	8mm	PTFE/Silicone/PTFE	100 pcs
151259	8mm	Butyl/PTFE	100 pcs

SNAP-ON® CAPS

POLYETHYLENE

Natural colored snap caps 8mm

CAT.NO.	SIZE	DESCRIPTION	CASE PACK
153410	8mm	PTFE	100 pcs
153415	8mm	PTFE/Silicone/PTFE	100 pcs
153420	8mm	Silicone/PTFE	100 pcs
153425	8mm	Rubber/ETFE	100 pcs
153435	8mm	Silicone/PTFE single slit	100 pcs

SNAP CAPS LINERLESS

153430	8mm	molded 0.25mm	100 pcs
--------	-----	---------------	---------

VIALSTATION®

ACRYLIC

This heavy acrylic vial rack stands firm on the bench. There is sufficient space between the vials which allows crimping.

CAT.NO.	VIALS	CASE PACK
153500	151111/151112	1 each

Holds 50 vials



AUTOSAMPLER VIALS

BOROSILICATE GLASS

4000, AUTOSYSTEM, ISS-100/200, INTEGRAL

For use with crimp seals or snap caps 11mm

These vials feature a large opening which reduces needle damage and easier needle positioning. Also allowing the use of larger limited volume inserts with a capacity of up to 300µl- Cat.No. 150820

CAT.NO.	VOLUME	SIZE	OEM	CASE PACK
---------	--------	------	-----	-----------

WIDE OPENING VIALS

151123	2ml	12x32mm	N930-1385	100 pcs
151124*	2ml	12x32mm	N930-2680	100 pcs

* amber glass

ALUMINUM CRIMP SEALS & SEPTA

All crimp seals are lacquered aluminum (allowing autoclaving) and are complete with septa. The hole has been increased for better needle access.

CAT.NO.	SIZE	DESCRIPTION	OEM	CASE PACK
---------	------	-------------	-----	-----------

151266	11mm	Silicone/PTFE	N930-6015	100 pcs
151266B	11mm	Silicone/PTFE	N930-2686	100 pcs
151266R	11mm	Silicone/PTFE	N930-2685	100 pcs
151266G	11mm	Silicone/PTFE	N930-2684	100 pcs

151216	11mm	Rubber/ETFE	0009-2205	100 pcs
--------	------	-------------	-----------	---------

SNAP-ON® CAPS

POLYETHYLENE

Natural colored snap caps 11mm

CAT.NO.	SIZE	DESCRIPTION	CASE PACK
---------	------	-------------	-----------

153310	11mm	PTFE	100 pcs
153315	11mm	PTFE/Silicone/PTFE	100 pcs
153320	11mm	Silicone/PTFE	100 pcs
153325	11mm	Rubber/ETFE	100 pcs
153330	11mm	Linerless	100 pcs

SNAP CAPS WITH STAR SLIT SEPTA

POLYETHYLENE

CAT.NO.	SIZE	DESCRIPTION	COLOR	CASE PACK
---------	------	-------------	-------	-----------

153340	11mm	Silicone/PTFE	natural	100 pcs
153341	11mm	Silicone/PTFE	red	100 pcs
153342	11mm	Silicone/PTFE	blue	100 pcs
153343	11mm	Silicone/PTFE	yellow	100 pcs
153344	11mm	Silicone/PTFE	green	100 pcs

MICROSERT® LIMITED VOLUME INSERTS

BOROSILICATE GLASS

These conical inserts below will fit precisely in above vials.

CAT.NO.	VOLUME	SIZE	OEM	CASE PACK
---------	--------	------	-----	-----------

150820	300µl	6x30mm	N930-2681	100 pcs
--------	-------	--------	-----------	---------



AUTOSAMPLER VIALS

BOROSILICATE GLASS

AS 2000B, 60/100 VIAL TRAY, AI-1

For use with crimp seals 8mm

CAT.NO.	VOLUME	SIZE	CASE PACK
151100 OEM- N930-1069	0.8ml	8x30mm	200 pcs
151106* * amber glass	0.8ml	8x30mm	200 pcs

ALUMINUM CRIMP SEALS & SEPTA

All crimp seals are lacquered aluminum (allowing autoclaving) and are complete with septa.

CAT.NO.	SIZE	DESCRIPTION	CASE PACK
151213 OEM- 03300806	8mm	Rubber/ETFE	100 pcs
151256	8mm	Silicone/PTFE	100 pcs

SNAP-ON® CAPS

POLYETHYLENE

CAT.NO.	SIZE	DESCRIPTION	CASE PACK
153410	8mm	PTFE	100 pcs
153415	8mm	PTFE/Silicone/PTFE	100 pcs
153420	8mm	Silicone/PTFE	100 pcs
153425	8mm	Rubber/ETFE	100 pcs
153430	8mm	Linerless	100 pcs

MICRO VIALS

BOROSILICATE GLASS

The internal tapered cone is designed for maximum sample removal. Manufactured from borosilicate glass with heavy walls and base which provides sample magnification, mechanical strength and stability for bench work without a rack.

CAT.NO.	VOLUME	SIZE	CAP SIZE	CASE PACK
152930	100µl	12x32mm	11mm	12 pcs

AUTOSAMPLER VIALS

BOROSILICATE GLASS

AI 1, 42 VIAL TRAY, ISS100/200, INTEGRAL 4000

For use with crimp seals 11mm

These tapered bottom vials can be used as a microvial for a wide range of analyses.

CAT.NO.	VOLUME	SIZE	OEM	CASE PACK
153800	1.0ml	12x32mm	N930-2137	100 pcs



PLASTIC MICRO VIALS

POLYPROPYLENE

These vials are made of non-ionic polypropylene and are chemically inert. They minimize pH changes and ion contamination. They have an internal tapered cone for maximum retrieval of content.

CAT.NO.	VOLUME	SIZE	OEM	CASE PACK
158004	750µl	12x32mm	N930-2130	100 pcs

ALUMINUM CRIMP SEALS & SEPTA

CAT.NO.	SIZE	DESCRIPTION	OEM	CASE PACK
151266	11mm	Silicone/PTFE		100 pcs
151269	11mm	Butyl/PTFE		100 pcs
151216	11mm	Rubber/ETFE	0009-2205	100 pcs

SNAP-ON® CAPS

POLYETHYLENE

Natural colored snap caps 11mm

CAT.NO.	SIZE	DESCRIPTION	CASE PACK
153310	11mm	PTFE	100 pcs
153315	11mm	PTFE/Silicone/PTFE	100 pcs
153320	11mm	Silicone/PTFE	100 pcs
153325	11mm	Rubber/ETFE	100 pcs

SNAP CAPS LINERLESS

153330	11mm	molded 0.25mm	100 pcs
--------	------	---------------	---------

VIALSTATION®

ACRYLIC

This heavy acrylic vial rack stands firm on the lab bench and securely locks vials in place for filling prior to placing them in the autosampler. Holds up to 50 vials.

CAT.NO.	VIALS	CASE PACK
153506	12x32mm	1 each
153508	8x30mm	1 each

Holds 50 vials



AUTOSAMPLER VIALS

BOROSILICATE GLASS

INTEGRAL 4000, AUTOSYSTEM, 4900

For use with screw caps 8-425 & 13-425

CAT.NO.	VOLUME	SIZE	CAP SIZE	CASE PACK
150640	1.5ml	12x32mm	8-425	100 pcs
150641*	1.5ml	12x32mm	8-425	100 pcs
150745	4.0ml	15x45mm	13-425	100 pcs
150746*	4.0ml	15x45mm	13-425	100 pcs

* amber glass

SCREW CAPS OPEN TOP

POLYPROPYLENE & PHENOLIC

CAT.NO.	SEPTA	COLOR	CAP SIZE	CASE PACK
150601	8mm	black	8-425	100 pcs
150701	12mm	black	13-425	100 pcs

SEPTA

For screw caps 150601 & 150701

CAT.NO.	SEPTA	DESCRIPTION	CASE PACK
150603	8mm	Butyl/PTFE	100 pcs
150604	8mm	Silicone/PTFE	100 pcs
150606	8mm	Rubber/ETFE	100 pcs
150703	12mm	Butyl/PTFE	100 pcs
150704	12mm	Silicone/PTFE	100 pcs
150706	12mm	Rubber/ETFE	100 pcs

TEFLON[®] SEPTA

For screw caps 150601 & 150701

CAT.NO.	DIAM	THICKNESS	CASE PACK
150605	8mm	0.25mm	1000 pcs
150705	12mm	0.25mm	1000 pcs



HEADSPACE VIALS

BOROSILICATE GLASS

HEADSPACE F42, F45, HS-40, HS-100, HS-101, HS-6

CAT.NO.	VOLUME	SIZE	OEM	CASE PACK
151103	20ml	23x75mm	B010-4236	100 pcs
151105	6ml	22x38mm	B010-4235	100 pcs

ALUMINUM CRIMP SEALS & SEPTA

CAT.NO.	DIAM	DESCRIPTION	CASE PACK
151286	20mm	Butyl/PTFE	100 pcs
151287	20mm	Silicone/PTFE	100 pcs
151222	20mm	Rubber-Butyl/PTFE	100 pcs

PRESSURE RELIEF CRIMP SEALS & SEPTA

Clear lacquered, special cap with bridges and scorelines which break at 3 +/- 0.5 bar

CAT.NO.	DIAM	DESCRIPTION	CASE PACK
151288	20mm	Butyl/PTFE	100 pcs
151289	20mm	Silicone/PTFE	100 pcs

SNAP-ON[®] CAPS

POLYETHYLENE

Snap caps 20mm are for low temperature work only

CAT.NO.	DIAM	DESCRIPTION	SEPTA	CASE PACK
153450	20mm	Silicone/PTFE	1mm	100 pcs
153455	20mm	Silicone/PTFE	2mm	100 pcs
153460	20mm	Butyl/PTFE	1mm	100 pcs
153465	20mm	Butyl/PTFE	2mm	100 pcs

CRIMPER

CAT.NO.	SIZE	OEM	CASE PACK
150003	20mm	B003-8134	1 each

DECRIMPER

CAT.NO.	SIZE	OEM	CASE PACK
150013	20mm	B003-8135	1 each



AUTOSAMPLER VIALS

BOROSILICATE GLASS

Use crimp seals or snap caps 8mm

CAT.NO.	VOLUME	SIZE	CASE PACK
---------	--------	------	-----------

FLAT BOTTOM VIALS

152600	0.8ml	7x40mm	100 pcs
152601*	0.8ml	7x40mm	100 pcs

CONICAL VIALS

152610	0.7ml	7x40mm	100 pcs
152611*	0.7ml	7x40mm	100 pcs

* amber glass

ALUMINUM CRIMP SEALS & SEPTA

Silver colored crimp seals for vials with 8mm crimp neck

CAT.NO.	DIAM	DESCRIPTION	CASE PACK
---------	------	-------------	-----------

151213	8mm	Rubber/ETFE	100 pcs
151256	8mm	Silicone/PTFE	100 pcs
151257	8mm	PTFE/Silicone/PTFE	100 pcs

SNAP-ON® CAPS

POLYETHYLENE

Natural colored snap caps for vials with either 8mm crimp neck

CAT.NO.	SIZE	DESCRIPTION	CASE PACK
---------	------	-------------	-----------

153410	8mm	PTFE	100 pcs
153415	8mm	PTFE/Silicone/PTFE	100 pcs
153420	8mm	Silicone/PTFE	100 pcs
153425	8mm	Rubber/ETFE	100 pcs

SNAP CAPS LINERLESS

153430	8mm	molded 0.25mm	100 pcs
--------	-----	---------------	---------



AUTOSAMPLER VIALS

BOROSILICATE GLASS

AOC-14, AOC 8B, SIL-6A, SIL-6B, SIL-9A

CAT.NO.	VOLUME	SIZE	OEM	CASE PACK
150640	1.5ml	12x32mm	221-37274-91	100 pcs
150641*	1.5ml	12x32mm		100 pcs

* amber glass

SCREW CAPS OPEN TOP

POLYPROPYLENE

Screw caps 8-425 with open top

CAT.NO.	SIZE	COLOR	CASE PACK
150601	8-425	black	100 pcs

SEPTA

For screw caps 150601

CAT.NO.	SEPTA	DESCRIPTION	CASE PACK
150603	8mm	Butyl/PTFE	100 pcs
150604	8mm	Silicone/PTFE	100 pcs
150606	8mm	Rubber/ETFE	100 pcs

SCREW CAPS & SEPTA

POLYPROPYLENE

Screw caps 8-425 have septa mounted ready for use

CAT.NO.	SIZE	TYPE	CASE PACK
150650	8-425	Silicone/PTFE	100 pcs
150651	8-425	Rubber/ETFE	100 pcs
150652	8-425	PTFE/Silicone/PTFE	100 pcs
150655	8-425	Silicone/PTFE single slit	100 pcs
150656	8-425	Silicone/PTFE cross slit	100 pcs
150657	8-425	Silicone/PTFE star slit	100 pcs

TEFLON® SEPTA

For screw caps 150601

CAT.NO.	DIAM	THICKNESS	CASE PACK
150605	8mm	0.25mm	1000 pcs

MICROSERT® LIMITED VOLUME INSERTS

BOROSILICATE GLASS

CAT.NO.	VOLUME	SIZE	CASE PACK
150613*	50µl	4x27mm	100 pcs
150610	100µl	5x30mm	100 pcs

* compression Springs 150614 needed for support

COMPRESSION SPRINGS

STAINLESS STEEL

CAT.NO.	INSERTS	CASE PACK
150614	4x27mm	100 pcs



AUTOSAMPLER VIALS

BOROSILICATE GLASS

AOC-14, SIL-6B, SIL-9A

Use crimp seals or snap caps 11mm

CAT.NO.	VOLUME	SIZE	CAP SIZE	CASE PACK
STANDARD VIALS				
151120	1.5ml	12x32mm	11mm	100 pcs
151121*	1.5ml	12x32mm	11mm	100 pcs

WIDE OPENING VIALS

151123	1.5ml	12x32mm	11mm	100 pcs
151124*	1.5ml	12x32mm	11mm	100 pcs

VIALS WITH WRITING SPOT

151125	1.5ml	12x32mm	11mm	100 pcs
151126*	1.5ml	12x32mm	11mm	100 pcs

* amber glass

ALUMINUM CRIMP SEALS & SEPTA

Available with a variety of different liner materials

CAT.NO.	SIZE	DESCRIPTION	CASE PACK
151216	11mm	Rubber/ETFE	100 pcs
151266	11mm	Silicone	100 pcs
151267	11mm	PTFE/Silicone/PTFE	100 pcs
151269	11mm	Butyl/PTFE	100 pcs

SNAP-ON® CAPS

POLYETHYLENE

Natural colored snap caps 11mm

CAT.NO.	SIZE	DESCRIPTION	CASE PACK
153310	11mm	PTFE	100 pcs
153315	11mm	PTFE/Silicone/PTFE	100 pcs
153320	11mm	Silicone/PTFE	100 pcs
153325	11mm	Rubber/FEP	100 pcs

SNAP CAPS LINERLESS

153330	11mm	molded 0.25mm	100 pcs
--------	------	---------------	---------

MICROSERT® LIMITED VOLUME INSERTS

BOROSILICATE GLASS

CAT.NO.	VOLUME	SIZE	VIALS	CASE PACK
150613*	50µl	4x27mm	151120/151121	100 pcs
150610	100µl	5x30mm	151120/151121	100 pcs
150820	300µl	6x30mm	151123/151124	100 pcs

* compression Springs 150614 needed for support

COMPRESSION SPRINGS

STAINLESS STEEL

CAT.NO.	INSERTS	CASE PACK
150614	4x27mm	100 pcs



PLASTIC MICRO VIALS

POLYPROPYLENE

These vials are made of non-ionic polypropylene and are chemically inert. They minimize pH changes and ion contamination. They have an internal tapered cone for maximum retrieval of content.

For use with XL™ screw caps 9-425

CAT.NO.	VOLUME	SIZE	CASE PACK
158005	300µl	12x32mm	100 pcs
OEM- 228-21276-91			

SCREW CAPS & SEPTA

POLYPROPYLENE

XL™ screw caps 9-425 have septa mounted ready for use

CAT.NO.	COLOR	DESCRIPTION	CASE PACK
155630	black	Rubber/ETFE	100 pcs
155620	black	Silicone/PTFE	100 pcs

MICRO VIALS

BOROSILICATE GLASS

For use with screw caps 8-425

CAT.NO.	VOLUME	SIZE	CASE PACK
152931	100µl	12x32mm	12 pcs
OEM- 228-15658-91			

VIAL KITS

Kit contains autosampler vials, screw caps & liners.

CAT.NO.	VOL	LINERS	CASE PACK
154935	1.5ml	PTFE/Silicone/PTFE	100 pcs
OEM- 228-15652-92			
154936	1.5ml	Aluminum/PTFE	100 pcs
OEM- 228-15652-91			



AUTOSAMPLER VIALS

BOROSILICATE GLASS

SIL-2AS & AOC-14

For use with screw caps 13-425

CAT.NO.	VOLUME	SIZE	CASE PACK
150745 OEM- 221-34269-91	4ml	15x45mm	100 pcs
150746* * amber glass	4ml	15x45mm	100 pcs

SCREW CAPS OPEN TOP

PHENOLIC

CAT.NO.	SEPTA	COLOR	CAP SIZE	CASE PACK
150701	12mm	black	13-425	100 pcs
150702	12mm	white	13-425	100 pcs

SEPTA

For screw caps 13-425

CAT.NO.	DIAM	THICKNESS	CASE PACK
150703	12mm	Butyl/PTFE	100 pcs
150704	12mm	Silicone/PTFE	100 pcs

SCREW CAPS WITH SEPTA MOUNTED

CAT.NO.	DIAM	DESCRIPTION	CASE PACK
150744	12mm	Silicone/PTFE	100 pcs

TEFLON® SEPTA

For screw caps 13-425

CAT.NO.	DIAM	THICKNESS	CASE PACK
150749	12mm	0.25mm	100 pcs



HEADSPACE VIALS

BOROSILICATE GLASS

HSS-2B

CAT.NO.	VOLUME	SIZE	CASE PACK
151199	27ml	30x58mm	100 pcs
OEM- 221-29083-91			

ALUMINUM CRIMP SEALS & SEPTA

Standard crimp seals with open top come with septa mounted for immediate use

CAT.NO.	DIAM	DESCRIPTION	CASE PACK
151286	20mm	Butyl/PTFE	100 pcs
151287	20mm	Silicone/PTFE	100 pcs

PRESSURE RELIEF CRIMP SEALS & SEPTA

These special crimp seals have bridges and scorelines which break at 3 +/-0.5 bar

For high temperature use

CAT.NO.	DIAM	DESCRIPTION	CASE PACK
151288	20mm	Butyl/PTFE	100 pcs
151289	20mm	Silicone/PTFE	100 pcs

CRIMPER

Manual crimper for securing aluminum crimp seals

CAT.NO.	SIZE	OEM	CASE PACK
150003	20mm		1 each
OEM- 221-29575-00			

DECRIMPER

Makes seal removal quickly and easily

CAT.NO.	SIZE	CASE PACK
150013	20mm	1 each

DECAPPER PLIERS

Inexpensive pliers for removal of seals

CAT.NO.	SIZE	CASE PACK
150023	20mm	1 each



AUTOSAMPLER VIALS

BOROSILICATE GLASS

Use crimp seals or snap caps 13mm

CAT.NO.	VOLUME	SIZE	TYPE	CASE PACK
152500	2.5ml	11x42mm	cylindrical	100 pcs
152510	1.0ml	11x42mm	conical	100 pcs

ALUMINUM CRIMP SEALS & SEPTA

Crimp seals 13mm come with septa mounted

CAT.NO.	SIZE	TYPE	CASE PACK
152501	13mm	Silicone/PTFE	100 pcs
152502	13mm	Butyl/PTFE	100 pcs
152503	13mm	Rubber/ETFE	100 pcs

SNAP-ON® CAPS- 13mm

POLYETHYLENE

CAT.NO.	DESCRIPTION	COLOR	CASE PACK
158120	Silicone/PTFE	natural	100 pcs
158125	Rubber/ETFE	natural	100 pcs

MICROSERT® LIMITED VOLUME INSERTS

BOROSILICATE GLASS

CAT.NO.	VOLUME	SIZE	FOR VIALS	CASE PACK
152514	300µl	6x30mm	152500	100 pcs

COMPRESSION SPRINGS

STAINLESS STEEL

Needed to support inserts in vials 152500

CAT.NO.	FOR INSERTS	CASE PACK
152515	150820	100 pcs



AUTOSAMPLER VIALS

BOROSILICATE GLASS

TRIATHLON

For use with screw caps 8-425 & 13-425

CAT.NO.	VOLUME	SIZE	CAP SIZE	CASE PACK
150640	1.5ml	12x32mm	8-425	100 pcs
150641*	1.5ml	12x32mm	8-425	100 pcs
150745	4.0ml	15x45mm	13-425	100 pcs
150746*	4.0ml	15x45mm	13-425	100 pcs

* amber glass

SCREW CAPS OPEN TOP

POLYPROPYLENE & PHENOLIC

CAT.NO.	SEPTA	COLOR	CAP SIZE	CASE PACK
150601	8mm	black	8-425	100 pcs
150701	12mm	black	13-425	100 pcs

SEPTA

For use with screw caps 150601 & 150701

CAT.NO.	SEPTA	DESCRIPTION	CASE PACK
150604	8mm	Silicone/PTFE	100 pcs
150606	8mm	Rubber/ETFE	100 pcs
150704	12mm	Silicone/PTFE	100 pcs
150706	12mm	Rubber/ETFE	100 pcs

MIDAS, ENDURANCE, MARATHON

For use with crimp seals or snap caps 11mm

CAT.NO.	VOLUME	SIZE	CASE PACK
151123	2ml	12x32mm	100 pcs
151124*	2ml	12x32mm	100 pcs

* amber glass

ENDURANCE

For use with crimp seals 20mm

CAT.NO.	VOLUME	SIZE	CASE PACK
151109	10ml	22x46mm	100 pcs

MARATHON

For use with crimp seals 20mm

CAT.NO.	VOLUME	SIZE	CASE PACK
151195	6ml	20x38mm	100 pcs

ALUMINUM CRIMP SEALS & SEPTA

Crimp seals 20mm with center hole and mounted septa

CAT.NO.	DIAM	DESCRIPTION	CASE PACK
151286	20mm	Butyl/PTFE	100 pcs
151287	20mm	Silicone/PTFE	100 pcs



SHELL VIALS

BOROSILICATE GLASS

Shell vials are economical for samples that do not require PTFE-lined septa. They use an inexpensive, one-piece polyethylene cap which has a piercing area with a thickness of 10 mil (0.25mm). With a cylindrical body and wide opening, the vials permit easy transfer of samples.

CAT.NO.	VOLUME	SIZE	OEM	CASE PACK
150351	2ml	12x32mm	A4946-010	100 pcs
150356*	2ml	12x32mm		100 pcs

* amber glass

PLASTIC CAPS

POLYETHYLENE

These natural colored polyethylene caps have 0.25mm star-center which eliminates vacuum in the vials during injection. A special inside portion holds and centers 300µl Inserts.

CAT.NO.	OEM	CASE PACK
150320	A4947-010	100 pcs

MICROSERT® LIMITED VOLUME INSERTS

BOROSILICATE GLASS

CAT.NO.	VOLUME	SIZE	OEM	CASE PACK
150820	300µl	6x30mm	A4949-010	100 pcs

SHELL VIAL KIT

Vials and caps are packaged in our reclosable **KITPACK™**

CAT.NO.	VOLUME	OEM	CASE PACK
150301	2ml	A4948-010	100 pcs
150360	2ml	A4950-010	100 pcs

Kit includes 300µl Inserts

VIALSTATION®

ACRYLIC

This heavy vial rack stands firm on the bench and securely locks vials in place for filling prior to placing them in the autosampler. The vialstation will hold up to 50 vials.

CAT.NO.	SIZE	OEM	CASE PACK
153506	190x90mm	A4970-010	1 each

PLASTIC MICRO VIAL KITS

POLYPROPYLENE

Vials come complete with 151216 crimp seals 11mm with rubber/ETFE septa.

CAT.NO.	VOLUME	SIZE	OEM	CASE PACK
154931	100µl	12x32mm	A4959-010	100 pcs
154930	600µl	12x32mm	A4958-010	100 pcs



AUTOSAMPLER VIALS

BOROSILICATE GLASS

AS 3000, 8875, 8880

For use with screw caps 8-425

CAT.NO.	VOLUME	SIZE	OEM	CASE PACK
150640	1.5ml	12x32mm	A4951-010	100 pcs
150641*	1.5ml	12x32mm	A4966-010	100 pcs

* amber glass

SCREW CAPS OPEN TOP

POLYPROPYLENE

Screw caps 8-425 with open top

CAT.NO.	DIAM	COLOR	OEM	CASE PACK
150601	8mm	black	A4953-010	100 pcs

TEFLON® SEPTA

For screw caps 150601

CAT.NO.	DIAM	THICKNESS	OEM	CASE PACK
150609	8mm	0.25mm	A4968-010	100 pcs

SEPTA

For screw caps 150601

CAT.NO.	DIAM	DESCRIPTION	OEM	CASE PACK
150604	8mm	Silicone/PTFE	A4952-010	100 pcs
150607*	8mm	Silicone/PTFE cross slit		100 pcs

* Electrophoresis

SCREW CAPS & SEPTA ASSEMBLED

Screw caps have septa mounted ready for use

CAT.NO.	DIAM	DESCRIPTION	OEM	CASE PACK
150650	8mm	Silicone/PTFE	A4969-010	100 pcs
150651	8mm	Rubber/ETFE		100 pcs

MICROSERT® LIMITED VOLUME INSERTS

BOROSILICATE GLASS

These conical inserts will fit precisely into above vials.

CAT.NO.	VOLUME	SIZE	OEM	CASE PACK
150613*	50µl	4x27mm	A4960-010	100 pcs
150610	100µl	5x30mm	A4961-010	100 pcs

* compression springs 150614 needed for support

COMPRESSION SPRINGS

STAINLESS STEEL

CAT.NO.	OEM	CASE PACK
150614	A4981-010	100 pcs



AUTOSAMPLER VIALS

BOROSILICATE GLASS

AS 3000, 8875, 8880

Use crimp seals or snap caps 11mm

CAT.NO.	VOLUME	SIZE	OEM	CASE PACK
151120	1.5ml	12x32mm	A4956-010	100 pcs
151121*	1.5ml	12x32mm	A4964-010	100 pcs

* amber glass

ALUMINUM CRIMP SEALS & SEPTA

Crimp seals 11mm with septa mounted for immediate use

CAT.NO.	SIZE	TYPE	OEM	CASE PACK
151216	11mm	Rubber/ETFE	A4955-010	100 pcs
151266	11mm	Silicone/PTFE		100 pcs

SNAP-ON® CAPS

POLYETHYLENE

Natural colored snap caps 11mm

CAT.NO.	SIZE	DESCRIPTION	CASE PACK
153310	11mm	PTFE	100 pcs
153315	11mm	PTFE/Silicone/PTFE	100 pcs
153320	11mm	Silicone/PTFE	100 pcs
153325	11mm	Rubber/ETFE	100 pcs

SNAP CAPS LINERLESS

153330	11mm	molded 0.25mm	100 pcs
--------	------	---------------	---------

SNAP CAPS are not intended for use with Vortex Mixing Chamber

MICROSERT® LIMITED VOLUME INSERTS

BOROSILICATE GLASS

These conical inserts will fit precisely into all of our vials

CAT.NO.	VOLUME	SIZE	OEM	CASE PACK
150613*	50µl	4x27mm	A4960-010	100 pcs
150610	100µl	5x30mm	A4961-010	100 pcs

* compression springs 150614 needed for support

COMPRESSION SPRINGS

STAINLESS STEEL

CAT.NO.	OEM	CASE PACK
150614	A4981-010	100 pcs



AUTOSAMPLER VIALS

BOROSILICATE GLASS

UNICAM- 4710, LC-XP, 4247

Use crimp seals or snap caps 11mm

CAT.NO.	VOLUME	SIZE	OEM	CASE PACK
151120	1.5ml	12x32mm	9345 146 95831	100 pcs
151121*	1.5ml	12x32mm	9345 146 95821	100 pcs

* amber glass

ALUMINUM CRIMP SEALS & SEPTA

Crimp seals 11mm with septa mounted

CAT.NO.	DIAM	DESCRIPTION	CASE PACK
151216	11mm	Rubber/ETFE	100 pcs
151266	11mm	Silicone/PTFE	100 pcs
151267	11mm	PTFE/Silicone/PTFE	100 pcs

UNICAM- LC-XP, 4247

Use crimp seals or snap caps 8mm

CAT.NO.	VOLUME	SIZE	TYPE	CASE PACK
151142*	0.7ml	7x30mm	round bottom	100 pcs
151112	0.3ml	6x32mm	round bottom	100 pcs
151111	0.2ml	6x32mm	conical bottom	100 pcs

* amber glass

ALUMINUM CRIMP SEALS & SEPTA

Crimp seals 8mm with septa mounted

CAT.NO.	DIAM	DESCRIPTION	CASE PACK
151213	8mm	Rubber/ETFE	100 pcs
151256	8mm	Silicone/PTFE	100 pcs

SNAP-ON® CAPS

POLYETHYLENE

Natural colored snap caps 8mm with mounted septa

CAT.NO.	SIZE	DESCRIPTION	CASE PACK
153410	8mm	PTFE	100 pcs
153415	8mm	PTFE/Silicone/PTFE	100 pcs
153420	8mm	Silicone/PTFE	100 pcs
153425	8mm	Rubber/ETFE	100 pcs



AUTOSAMPLER VIALS

BOROSILICATE GLASS

UNICAM- CRYSTAL SYSTEM 230 & 310

CAT.NO.	VOLUME	SIZE	CAP SIZE	CASE PACK
151112	0.3ml	6x32mm	8mm	100 pcs
151111	0.2ml	6x32mm	8mm	100 pcs
151120	1.5ml	12x32mm	11mm	100 pcs
Ref. Unicom 9345 146 95831				

AUTOSAMPLER VIALS

BOROSILICATE GLASS

UNICAM- 610, 612

Use crimp seals or snap caps 8mm

CAT.NO.	VOLUME	SIZE	CAP SIZE	CASE PACK
151140*	0.5ml	7x32mm	8mm	100 pcs
Ref. Unicom 9435 146 95771				
151100	0.7ml	8x30mm	8mm	200 pcs
151106*	0.7ml	8x30mm	8mm	200 pcs
*amber glass				

AUTOSAMPLER VIALS

BOROSILICATE GLASS

UNICAM- 4700 GC & S4/ S8

Use crimp seals or snap caps 8mm

CAT.NO.	VOLUME	SIZE	CAP SIZE	CASE PACK
152600	0.8ml	7x40mm	8mm	100 pcs
152601*	0.8ml	7x40mm	8mm	100 pcs
Ref. Unicom 9435 146 95801				
152610	0.7ml	7x40mm	8mm	100 pcs
152611*	0.7ml	7x40mm	8mm	100 pcs
Ref. Unicom 9435 146 95811				
* amber glass				

UNICAM- 4700 LC

Use crimp seals or snap caps 8mm

CAT.NO.	VOLUME	SIZE	CAP SIZE	CASE PACK
152610	0.7ml	7x40mm	8mm	100 pcs
152611*	0.7ml	7x40mm	8mm	100 pcs
151112	0.3ml	6x32mm	8mm	100 pcs
151111	0.2ml	6x32mm	8mm	100 pcs

Use screw caps 8-425

CAT.NO.	VOLUME	SIZE	CAP SIZE	CASE PACK
150640	1.5ml	12x32mm	8-425	100 pcs
Ref. Unicom 9534 146 95951				
150641*	1.5ml	12x32mm	8-425	100 pcs
Ref. Unicom 9435 146 95841				
* amber glass				



ALUMINUM CRIMP SEALS & SEPTA

Crimp seals 11mm with septa mounted

CAT.NO.	DIAM	DESCRIPTION	CASE PACK
151213	8mm	Rubber/ETFE	100 pcs
151256	8mm	Silicone/PTFE	100 pcs
151257	8mm	PTFE/Silicone/PTFE	100 pcs
151259	8mm	Butyl/PTFE	100 pcs
151216	11mm	Rubber/ETFE	100 pcs
151266	11mm	Silicone/PTFE	100 pcs
151267	11mm	PTFE/Silicone/PTFE	100 pcs
151269	11mm	Butyl/PTFE	100 pcs

SNAP-ON® CAPS

POLYETHYLENE

Natural colored snap caps for vials with either 8 or 11mm crimp neck

CAT.NO.	SIZE	DESCRIPTION	CASE PACK
153410	8mm	PTFE	100 pcs
153415	8mm	PTFE/Silicone/PTFE	100 pcs
153420	8mm	Silicone/PTFE	100 pcs
153425	8mm	Rubber/ETFE	100 pcs
153310	11mm	PTFE	100 pcs
153315	11mm	PTFE/Silicone/PTFE	100 pcs
153320	11mm	Silicone/PTFE	100 pcs
153325	11mm	Rubber/ETFE	100 pcs

SNAP CAPS LINERLESS

153430	8mm	molded 0.25mm	100 pcs
153330	11mm	molded 0.25mm	100 pcs

MICROSERT® LIMITED VOLUME INSERTS

BOROSILICATE GLASS

4710, 4700 LC, LC-XP

for use with vials 151120, 150640, 150301

CAT.NO.	VOLUME	SIZE	VIALS	CASE PACK
150610	100µl	5x30mm	151120/150640	100 pcs



XL® AUTOSAMPLER VIALS

BOROSILICATE GLASS

VARIAN-ProStar410, ProStar420, ProStar430, 8400, 8410

For use with screw caps 9-425

These vials feature a large opening which reduces needle damage and easier needle positioning. Also allowing the use of larger Limited Volume Inserts with a capacity of up to 300µl Cat.No. 155650.

CAT.NO.	VOLUME	SIZE	OEM	CASE PACK
---------	--------	------	-----	-----------

WIDE OPENING VIALS

155600	2ml	12x32mm	392611654	100 pcs
155601*	2ml	12x32mm	392611653	100 pcs

* amber glass

XL® SCREW CAPS WITH MOUNTED SEPTA

Red screw caps 9-425 with mounted septa

CAT.NO.	COLOR	DESCRIPTION	CASE PACK
---------	-------	-------------	-----------

155622	red	Silicone/PTFE	100 pcs
OEM- 392611659			

155627	red	PTFE/Silicone/PTFE	100 pcs
OEM- 392611658			

155637	red	Silicone/PTFE pre-slit	100 pcs
OEM- 392611660			

155632	red	Rubber/PTFE	100 pcs
OEM- 392611657			

MICROSERT® LIMITED VOLUME INSERTS

BOROSILICATE GLASS

CAT.NO.	VOLUME	SIZE	TYPE	CASE PACK
---------	--------	------	------	-----------

155650	200µl	6x30mm	conical	100 pcs
OEM- 392611596				

PLASTIC MICRO VIALS

POLYPROPYLENE

These vials are precision injection-molded and fit a variety of autosamplers. Polypropylene provides safety from breakage and dimension tolerance reliability for capping and instrumentation use.

This vials are non-ionic, minimizing pH changes and ion contamination.

For use with 9-425 screw caps

CAT.NO.	VOLUME	SIZE	CAP SIZE	CASE PACK
---------	--------	------	----------	-----------

158008	0.10ml	12x32mm	9-425	100 pcs
OEM- 392611665				



AUTOSAMPLER VIALS

BOROSILICATE GLASS

VARIAN- 8000,8100,8200,8035,8055,9100, MARATHON

For use with screw caps 8-425

CAT.NO.	VOLUME	SIZE		CASE PACK
STANDARD VIALS				
150640	2ml	12x32mm		100 pcs
OEM- 392611640				
150641*	2ml	12x32mm		100 pcs
OEM- 392611639				
* amber glass				
153810	1ml	12x32mm	conical	100 pcs
OEM- 00-997431-06				

SCREW CAPS WITH MOUNTED SEPTA

POLYPROPYLENE

Black screw caps with septa mounted. Also available in other colors on request.

CAT.NO.	SIZE	DESCRIPTION	CASE PACK
150650	8-425	Silicone/PTFE	100 pcs
OEM- 392611641			
150651	8-425	Rubber/PTFE	100 pcs
OEM- 392611645			
150652	8-425	PTFE/Silicone/PTFE	100 pcs
OEM- 39261164			

SCREW CAPS OPEN TOP

POLYPROPYLENE

Screw caps 8-425 with open top

CAT.NO.	SEPTA	COLOR	CASE PACK
150601	8mm	black	100 pcs

SEPTA

For screw caps 150601

CAT.NO.	DIAM	DESCRIPTION	CASE PACK
150622	8mm	Silicone/PTFE red for 9090/9095 LC samplers	100 pcs
OEM- 69-000169-00			
150604	8mm	Silicone/PTFE blue for GC 8000 Series & 8100	100 pcs
OEM- 390614901			

MICROSERT® LIMITED VOLUME INSERTS

BOROSILICATE GLASS

CAT.NO.	VOLUME	SIZE	TYPE	CASE PACK
150610	100µl	5x30mm	conical	100 pcs
OEM- 392611593				



AUTOSAMPLER VIALS

BOROSILICATE GLASS

VARIAN 8100, 8200, 9100, MARATHON

For use with crimp seals 11mm

CAT.NO.	VOLUME	SIZE	CAP	CASE PACK
STANDARD VIALS				
151120	2ml	12x32mm	11mm	100 pcs
OEM- 03-908865-00				
151121*	2ml	12x32mm	11mm	100 pcs
OEM- 03-908865-01				
*amber glass				

AUTOSAMPLER VIALS

BOROSILICATE GLASS

MARATHON

Use crimp seals or snap caps 11mm
these tapered bottom vial can be used as a microvial for a wide range of analyses

CAT.NO.	VOLUME	SIZE	CAP	CASE PACK
153800	1ml	12x32mm	11mm	100 pcs
OEM- 00-997431-08				

ALUMINUM CRIMP SEALS & SEPTA

Crimp seals 11mm with open top come with septa mounted

CAT.NO.	DIAM	DESCRIPTION	CASE PACK
151216	11mm	Rubber/ETFE	100 pcs
OEM- 00-997797-01			
151266	11mm	Silicone/PTFE	100 pcs
OEM- 00-997797-03			
151267	11mm	PTFE/Silicone/PTFE	100 pcs
OEM- 00-997797-02			
151269	11mm	Butyl/PTFE	100 pcs
OEM- 00-997797-05			

MICROSERT® LIMITED VOLUME INSERTS

BOROSILICATE GLASS

CAT.NO.	VOLUME	SIZE	TYPE	CASE PACK
150610	100µl	5x30mm	conical	100 pcs
OEM- 392611593				



VIALSTATION®

ACRYLIC

For vials 155600, 150640, 151120 and 151123

This heavy acrylic vial rack stands firm on the lab bench. It holds 50 inserts which can be filled and closed prior to placing them in the vials.

CAT.NO.	SIZE	CASE PACK
153506	190x90mm	1 each
OEM- 392611516		



AUTOSAMPLER VIALS

BOROSILICATE GLASS

VARIAN- ProStar410, ProStar420, ProStar320, 8400, 8410

Use crimp seals or snap caps 11mm

CAT.NO.	VOLUME	SIZE	OEM	CASE PACK
---------	--------	------	-----	-----------

WIDE OPENING VIALS

151123	2ml	12x32mm	392611635	100 pcs
151124*	2ml	12x32mm	392611634	100 pcs

*amber glass

ALUMINUM CRIMP SEALS & SEPTA

Crimp seals 11mm with open top come with septa mounted

CAT.NO.	DIAM	DESCRIPTION	CASE PACK
---------	------	-------------	-----------

151216	11mm	Rubber/ETFE	100 pcs
OEM-	392611627		

151266	11mm	Silicone/PTFE	100 pcs
OEM-	392611631		

151269	11mm	Butyl/PTFE	100 pcs
OEM-	392611632		

SNAP-ON® CAPS

POLYETHYLENE

Natural colored snap caps 11mm

CAT.NO.	SIZE	DESCRIPTION	CASE PACK
---------	------	-------------	-----------

153325	11mm	Rubber/PTFE	100 pcs
OEM-	392611871		

153320	11mm	Silicone/PTFE	100 pcs
OEM-	392611873		

153335	11mm	Silicone/PTFE slit Septa	100 pcs
OEM-	392611874		

153315	11mm	PTFE/Silicone/PTFE	100 pcs
OEM-	392611872		

MICROSERT® LIMITED VOLUME INSERTS

BOROSILICATE GLASS

CAT.NO.	VOLUME	SIZE	TYPE	CASE PACK
---------	--------	------	------	-----------

155650	200µl	6x30mm	conical	100 pcs
OEM-	392611596			

PLASTIC MICRO VIALS

POLYPROPYLENE

Use with crimp seals 11mm

CAT.NO.	VOLUME	SIZE	CAP SIZE	CASE PACK
---------	--------	------	----------	-----------

158003	0.10ml	12x32mm	11mm	100 pcs
OEM-	392611666			

158004	0.75ml	12x32mm	11mm	100 pcs
OEM-	392611667			



AUTOSAMPLER VIALS

BOROSILICATE GLASS

WATERS WISP™ 710, 712, 715, 717

For use with 48 vial carousel

CAT.NO.	VOLUME	SIZE	CAP SIZE	OEM	CASE	PACK
150745	4ml	15x45mm	13-425	72710	100	pcs
150746*	4ml	15x45mm	13-425		100	pcs

* amber glass

SCREW CAPS WITH OPEN TOP

PHENOLIC

CAT.NO.	SEPTA	COLOR	CAP SIZE	OEM	CASE	PACK
150701	12mm	black	13-425	72711	100	pcs

TEFLON® SEPTA

For screw cap 150701

CAT.NO.	DIAM	THICKNESS	OEM	CASE	PACK
150749	12mm	0.25mm	72714	100	pcs
150705	12mm	0.25mm	73005	1000	pcs

SEPTA

CAT.NO.	DIAM	DESCRIPTION	OEM	CASE	PACK
150703	12mm	Butyl/PTFE		100	pcs
150704	12mm	Silicone/PTFE	22681	100	pcs
150708	12mm	Silicone/PTFE	73008	100	pcs
150709	12mm	Silicone/PTFE slit septa		100	pcs

SCREW CAPS WITH SEPTA MOUNTED

CAT.NO.	DIAM	DESCRIPTION	OEM	CASE	PACK
150744	12mm	Silicone/PTFE	73010	100	pcs

MICROSERT® LIMITED VOLUME INSERTS

BOROSILICATE GLASS

CAT.NO.	VOLUME	DEAD VOLUME	OEM	CASE	PACK
150710	300µl	15µl	15199	100	pcs
150714	300µl	5µl	72704	100	pcs

PLASTIC

150743	300µl	5µl	72030	100	pcs
--------	-------	-----	-------	-----	-----

COMPRESSION SPRINGS

STAINLESS STEEL

For inserts 150710, 150714 & 150743

CAT.NO.	OEM	CASE	PACK
150715	72708	100	pcs



SHELL VIALS

BOROSILICATE GLASS

WATERS WISP™ 710, 712, 715, 717

For use in the 48 vial carousel

These shell vials are the economical solution to autosampler vials using screw or crimp caps. They come complete with a polyethylene cap which serves as both cap and septum.

CAT.NO.	VOLUME	SIZE	OEM	CASE PACK
---------	--------	------	-----	-----------

GLASS

150770	4ml	15x45mm	25051	100 pcs
150771*	4ml	15x45mm	25050	100 pcs

*amber glass

PLASTIC

150772	4ml	15x45mm		100 pcs
150773*	3ml	15x45mm	22475	100 pcs

*with conical bottom

Complete with plastic caps

PLASTIC CAPS

POLYETHYLENE

Plug style closures for shell vials

CAT.NO.	COLOR	CASE PACK
---------	-------	-----------

150775	natural	100 pcs
--------	---------	---------



AUTOSAMPLER VIALS

BOROSILICATE GLASS

WATERS WISP™ 710, 712, 715, 717

For use in the 48 vial carousel

Use aluminum crimp seals or snap caps 13mm

Versatile neck allows use of snap caps with or without seals which may be snapped on and off by hand eliminating the need of crimping and decapping tools.

CAT.NO.	VOLUME	SIZE	CAP SIZE	CASE PACK
---------	--------	------	----------	-----------

158100	4ml	15x45mm	13mm	100 pcs
158101*	4ml	15x45mm	13mm	100 pcs

*amber glass

SNAP-ON® CAPS

Natural colored snap caps 13mm for vials 158100 & 158102

CAT.NO.	DESCRIPTION	CASE PACK
---------	-------------	-----------

158120	Silicone/PTFE	100 pcs
158135	Silicone/PTFE single slit	100 pcs
158140	Silicone/PTFE cross slit	100 pcs
158145	Silicone/PTFE star slit	100 pcs



AUTOSAMPLER VIALS

BOROSILICATE GLASS

WATERS WISP™ 710, 712, 715, 717

For use in the 96-position carousel

These vials and plastic caps were designed for best sealability. They are manufactured to close tolerances assuring absolute tightness.

Vials are complete with plastic caps.

CAT.NO.	VOLUME	SIZE	OEM	CASE PACK
---------	--------	------	-----	-----------

CLEAR GLASS

150721	1ml	8x40mm	25054	250 pcs
150722	1ml	8x40mm		1000 pcs

AMBER GLASS

150751	1ml	8x40mm	25053	250 pcs
150752	1ml	8x40mm		1000 pcs

PLASTIC VIALS

POLYPROPYLENE

WATERS WISP™ 710, 712, 715, 717

For use in the 96-position carousel
Ion Chromatography and Bio-Applications

Manufactured from non-reactive polypropylene for applications where the highest grade glassware can cause ion contamination in sensitive samples and for drug/protein samples that adhere to glass. These plastic vials are non-ionic, minimizing pH changes and ion contamination.

Vials are complete with plastic caps.

CAT.NO.	VOLUME	SIZE	CASE PACK
---------	--------	------	-----------

150755	1ml	8x40mm	250 pcs
150758	1ml	8x40mm	1000 pcs

PLASTIC LIMITED VOLUME VIALS

POLYPROPYLENE

WATERS WISP™ 710, 712, 715, 717

For use in the 96-position carousel
Conical internal shape provide total downward drainage for maximum retrieval of contents.

Vials are complete with plastic caps.

CAT.NO.	VOLUME	SIZE	OEM	CASE PACK
---------	--------	------	-----	-----------

150756	0.7ml	8x40mm	22476	250 pcs
150759	0.7ml	8x40mm		1000 pcs

PLASTIC CAPS

POLYETHYLENE

For vials 150721, 150751, 150755, 150756

CAT.NO.	OEM	CASE PACK
---------	-----	-----------

150734	78515	250 pcs
--------	-------	---------



AUTOSAMPLER VIALS

BOROSILICATE GLASS

WATERS WISP™ 710, 712, 715, 717

For use in the 96 vial carousel
use crimp seals or snap caps 8mm

Suitable for compounds that build-up pressure in the vial. The crimp seals and septa used are suitable for multiple injections.

CAT.NO.	VOLUME	SIZE	CAP SIZE	CASE PACK
---------	--------	------	----------	-----------

CLEAR GLASS

150725*	1ml	8x40mm	8mm	250 pcs
150726	1ml	8x40mm	8mm	100 pcs

AMBER GLASS

150738*	1ml	8x40mm	8mm	250 pcs
150739	1ml	8x40mm	8mm	100 pcs

* includes crimp seals 151256

ALUMINUM CRIMP SEALS & SEPTA

for vials Cat. No. 150725, 150726, 150738 & 150739

CAT.NO.	DIAM	DESCRIPTION	CASE PACK
---------	------	-------------	-----------

151213	8mm	Rubber/TEF	100 pcs
151256	8mm	Silicone/PTFE	100 pcs

MICROSERT® LIMITED VOLUME INSERT

BOROSILICATE GLASS

For vials Cat. No. 150721 & 150751

These limited volume inserts were designed for use in our vials Cat.No. 150721and 150751. Conical bottom provide total downward drainage of contents.

CAT.NO.	VOLUME	DEAD VOL	SIZE	CASE PACK
---------	--------	----------	------	-----------

150730*	100µl	10µl	5x30mm	100 pcs
OEM- 72294				

150741	250µl	10µl	6x30mm	100 pcs
--------	-------	------	--------	---------

Compression spring Cat. No.150729 must be used for support.

COMPRESSION SPRING

for support of inserts Cat.No. 150730 and 150741

CAT.NO.	LENGTH	DIAM	OEM	CASE PACK
---------	--------	------	-----	-----------

150729	15mm	5mm	72289	100 pcs
--------	------	-----	-------	---------

VIALSTATION®

ACRYLIC

For vials 150721, 150751, 150755, 150756

CAT.NO.	SIZE	CASE PACK
---------	------	-----------

153505	190x90mm	1 each
--------	----------	--------

Holds up to 50 vials



ALLIANCE®

AUTOSAMPLER VIALS

BOROSILICATE GLASS

Use crimp seals or snap caps 11mm

CAT.NO.	VOLUME	SIZE	OEM	CASE PACK
---------	--------	------	-----	-----------

WIDE OPENING VIALS

151123	1.5ml	12x32mm	094222	100 pcs
151124*	1.5ml	12x32mm	094223	100 pcs

VIALS WITH WRITING SPOT

151125	1.5ml	12x32mm		100 pcs
151126*	1.5ml	12x32mm	094220	100 pcs

*amber glass

SNAP-ON® CAPS

POLYETHYLENE

Natural colored snap caps 11mm

CAT.NO.	SIZE	DESCRIPTION	CASE PACK
---------	------	-------------	-----------

153310	11mm	PTFE	100 pcs
OEM- 186000328			

153320	11mm	Silicone/PTFE	100 pcs
OEM- 186000303			

153335	11mm	Silicone/PTFE slit Septa	100 pcs
OEM- 186000304			

SNAP CAPS LINERLESS

153330	11mm	molded 0.25mm	100 pcs
--------	------	---------------	---------

ALUMINUM CRIMP SEALS & SEPTA

CAT.NO.	DIAM	DESCRIPTION	CASE PACK
---------	------	-------------	-----------

151266	11mm	Silicone/PTFE	100 pcs
151269	11mm	Butyl/PTFE	100 pcs
151216	11mm	Rubber/TEF	100 pcs

MICROSERT® LIMITED VOLUME INSERTS

BOROSILICATE GLASS

These conical inserts will fit precisely into our vials

CAT.NO.	VOLUME	SIZE	CASE PACK
---------	--------	------	-----------

150820	300µl	6x30mm	100 pcs
--------	-------	--------	---------



ALLIANCE®

XL® AUTOSAMPLER VIALS

BOROSILICATE GLASS

Use with XL™ Screw Caps 9-425

CAT.NO.	VOLUME	SIZE	OEM	CASE PACK
---------	--------	------	-----	-----------

WIDE OPENING

155600	2ml	12x32mm	186000273	100 pcs
155601*	2ml	12x32mm		100 pcs

VIALS WITH WRITING SPOT

155602	2ml	12x32mm	186000845	100 pcs
155603*	2ml	12x32mm	186000848	100 pcs

*amber glass

XL® SCREW CAPS WITH SEPTA MOUNTED

CAT.NO.	COLOR	DESCRIPTION	CASE PACK
---------	-------	-------------	-----------

155621	blue	Silicone/PTFE	100 pcs
OEM- 186000274			

155636	blue	Silicone/PTFE slit	100 pcs
OEM- 186000851			

XL® COMBINATION PACKAGE

XL® Vials have a 40% wider opening to reduce the chance of bent needles. Kit contains autosampler vials 12x32mm and blue screw caps 9-425 with mounted septa as listed below.

CAT.NO.	VOLUME	SEPTA	CASE PACK
---------	--------	-------	-----------

CLEAR GLASS

158601	1.5ml	Silicone/PTFE	100 pcs
OEM- 186000272			

158616	1.5ml	Silicone/PTFE slit	100 pcs
OEM- 186000307			

CLEAR GLASS, WRITING SPOT

158901	1.5ml	Silicone/PTFE	100 pcs
OEM-186000843			

158916	1.5ml	Silicone/PTFE slit	100 pcs
OEM- 186000844			

AMBER GLASS, WRITING SPOT

158946	1.5ml	Silicone/PTFE	100 pcs
OEM- 186000846			

158961	1.5ml	Silicone/PTFE slit	100 pcs
OEM- 186000847			

MICROSERT® LIMITED VOLUME INSERTS

BOROSILICATE GLASS

These conical inserts will fit precisely into our vials

CAT.NO.	VOLUME	SIZE	CASE PACK
---------	--------	------	-----------

150820	300µl	6x30mm	100 pcs
--------	-------	--------	---------



ALLIANCE®

PLASTIC MICRO VIALS

POLYPROPYLENE

These vials are precision injection-molded and fit a variety of autosamplers. Polypropylene provides safety from breakage and dimension tolerance reliability for capping and instrumentation use.

This vials are non-ionic, minimizing pH changes and ion contamination.

CAT.NO.	VOLUME	SIZE	OEM	CASE PACK
---------	--------	------	-----	-----------

CRIMP VIALS

158003	0.30ml	12x32mm	186000854	100 pcs
158004	0.75ml	12x32mm		100 pcs

SCREW VIALS

158008	0.30ml	12x32mm	186000851	100 pcs
--------	--------	---------	-----------	---------

COMBINATION PACKAGE

POLYPROPYLENE

Vials and closures are packed in our reclosable transparent Kitpack™. Kit contains plastic autosampler vials 12x32mm and snap caps 11mm with mounted septa as listed below.

CAT.NO.	VOLUME	SEPTA	CASE PACK
---------	--------	-------	-----------

CRIMP VIALS & SNAP CAPS

158821	0.3ml	Silicone/PTFE	100 pcs
OEM- 186000849			

158822	0.3ml	Silicone/PTFE slit	100 pcs
OEM- 186000850			

SCREW VIALS & XL SCREW CAPS

158806	0.3ml	Silicone/PTFE	100 pcs
OEM- 186000852			

158807	0.3ml	Silicone/PTFE slit	100 pcs
OEM- 186000853			

ALLIANCE® GPC2000

CAT.NO.	VOLUME	SIZE	OEM	CASE PACK
---------	--------	------	-----	-----------

151107	10ml	22x46mm	223176	100 pcs
--------	------	---------	--------	---------

ALUMINUM CRIMP SEALS & SEPTA

Crimp seals 20mm with center hole. Use only when internal pressure is low.

CAT.NO.	DIAM	DESCRIPTION	CASE PACK
---------	------	-------------	-----------

151286	20mm	Butyl/PTFE	100 pcs
151287	20mm	Silicone/PTFE	100 pcs



TEST TUBES

BOROSILICATE GLASS

ROUND BOTTOM RIMLESS

CAT.NO.	REF.NO.	VOLUME	SIZE	CASE PACK
150405	ZA7517	4ml	12x 75mm	100 pcs
150406	ZA7502	7ml	13x100mm	100 pcs
150407	ZA7503	12ml	16x100mm	100 pcs
150408	ZA7521	16ml	16x125mm	100 pcs

CULTURE TUBES

BOROSILICATE GLASS

ROUND BOTTOM SCREW NECK TYPE

use screw caps 15-415

CAT.NO.	REF.NO.	VOLUME	SIZE	CASE PACK
154800	ZA7506	12ml	16x100mm	250 pcs

SCREW CAPS

PHENOLIC

Screw caps solid top with mounted liners

CAT.NO.	SIZE	LINERS	CASE PACK
154810	15-415	SBR*	100 pcs
154811	15-415	Butyl/PTFE	100 pcs
154812	15-415	Cork/Aluminum	100 pcs

*Styrene Butadiene Rubber

SCREW CAPS

PHENOLIC

Screw Caps with open top

CAT.NO.	SIZE	LINERS	CASE PACK
154815	15-415		100 pcs
154816		Silicone/PTFE	100 pcs
154817		Rubber/PTFE	100 pcs

Screw caps open top with mounted liners

154820	15-415	Silicone/PTFE	100 pcs
154821	15-415	Rubber/PTFE	100 pcs



SCINTILLATION VIALS



SCINTILLATION VIALS

BOROSILICATE GLASS

YOU CAN COUNT ON THEM VIAL AFTER VIAL

Made from low-potassium glass and critical manufacturing tolerances assure reliable, consistent results in scintillation counting. Vials load properly into counting machines without jamming or breaking. Background counts are consistent and low, ultra violet transmission high.

These vials are used primarily for the radioisotope counting usually employed with very low levels of beta radioactivity.

CAT.NO.	VOLUME	SIZE	CAP SIZE	CASE PACK
151600	20ml	27x58mm	22mm	100 pcs

VIALKIT

Contains scintillation vials and screw caps

151603	20ml	27x58mm	22mm	500 pcs
--------	------	---------	------	---------

SCREW CAPS

PHENOLIC

Screw caps are made from phenolic and have either a metal foil, polypropylene disc or foam seal.

White caps have tops suitable for writing.

CAT.NO.	SEPTA	CAP SIZE	CASE PACK
151610	cork/aluminum	22mm	100 pcs
151614	Polyethylene foam	22mm	100 pcs



SCINTILLATION VIALS

POLYETHYLENE-HD

Plastic vials come complete with screw caps

CAT.NO.	VOLUME	SIZE	CAP SIZE	CASE PACK
151605	20ml	27x58mm	22mm	1000 pcs
151607	6ml	15x56mm		2500 pcs

EPA VIALS



EPA WATER SAMPLING VIALS

BOROSILICATE GLASS

These vials are for water sampling analysis of priority pollutants or Trihalomethanes in drinking water.

- Borosilicate glass
- Shrink-wrapped to maintain cleanliness
- Ideal for VOA (Volatile Organics Analysis)

VIAL KIT

Vials, screw caps open top & silicone/PTFE liners not mounted

CAT.NO.	VOLUME	SIZE	CASE PACK
151900	40ml	27x95mm	100 pcs

Kit contents: 151910/ 151902/ 151908

VIAL KIT

Vials, screw caps open top & silicone/PTFE liners mounted

CAT.NO.	VOLUME	SIZE	CASE PACK
151915	40ml	27x95mm	100 pcs
151916	40ml	27x95mm	100 pcs
151917	40ml	27x95mm	100 pcs

Kit contents: 151915= 151910/ 151902/ 151906
151916= 151910/ 151902/ 151907
151917= 151910/ 151902/ 151908

EPA VIALS

CAT.NO.	VOLUME	SIZE	CASE PACK
151955	20ml	27x 58mm	100 pcs
151956*	20ml	27x 58mm	100 pcs
151910	40ml	27x 95mm	100 pcs
151911*	40ml	27x 95mm	100 pcs
151912	60ml	27x 140mm	100 pcs
151913*	60ml	27x 140mm	100 pcs

* amber glass

SCREW CAPS OPEN TOP

PHENOLIC

Screw caps 24-400 are open top version

CAT.NO.	SIZE	COLOR	CASE PACK
151902	24-400	black	100 pcs
151905	24-400	white	100 pcs

SEPTA

CAT.NO.	TYPE	THICKNESS	CASE PACK
151904	Butyl/PTFE	1.0mm	100 pcs
151906	Silicone/PTFE	1.5mm	100 pcs
151907	Silicone/PTFE	2.0mm	100 pcs
151908	Silicone/PTFE	3.0mm	100 pcs

SHELL VIALS



SHELL VIALS & CAPS

BOROSILICATE GLASS

These vials and caps are an economical alternative to standard crimp and screw thread vials suitable for one-time use in most auto-samplers that don't pressurize the vials.

The polyethylene caps have a 0.25mm star-center which eliminates vacuum build-up in the vials after injection. A special inside guide holds and centers Limited Volume Inserts with up to 300µl capacity Cat.No.150820.

Complete with one-piece polyethylene caps which serve as both cap and septum.

CAT.NO.	VOLUME	SIZE	CASE PACK
---------	--------	------	-----------

CLEAR GLASS

150301	2ml	12x32mm	100 pcs
150302	4ml	15x45mm	100 pcs

AMBER GLASS

150306	2ml	12x32mm	100 pcs
150307	4ml	15x45mm	100 pcs

SHELL VIALS

BOROSILICATE GLASS

CAT.NO.	VOLUME	SIZE	CASE PACK
---------	--------	------	-----------

150351	2ml	12x32mm	100 pcs
150356*	2ml	12x32mm	100 pcs

150352	4ml	15x45mm	100 pcs
150357*	4ml	15x45mm	100 pcs

* amber glass

PLASTIC CAPS

POLYETHYLENE

Special design holds and centers limited volume inserts

CAT.NO.	COLOR	FOR VIALS	CASE PACK
---------	-------	-----------	-----------

150320	natural	150351/150356	100 pcs
150330	natural	150352/150357	100 pcs

Vials and caps are supplied in our **KITPACK®**

MICROSERT® LIMITED VOLUME INSERTS

BOROSILICATE GLASS

CAT.NO.	VOLUME	SIZE	TYPE	CASE PACK
---------	--------	------	------	-----------

150820	300µl	6x30mm	conical	100 pcs
150821	400µl	6x30mm	cylindrical	100 pcs

SAMPLE VIALS



SAMPLE VIALS

BOROSILICATE GLASS

Made from borosilicate glass which protects against product contamination caused by alkali which can be extracted from ordinary glass.

Can be cleaned by standard chemicals or by heating techniques conventionally used in an analytical laboratory without affecting type I quality.

CLEAR GLASS

CAT.NO.	VOLUME	SIZE	CAP SIZE	CASE PACK
150900	1.5ml	12 x 32mm	8-425	100 pcs
150901	2.0ml	12 x 36mm	8-425	100 pcs
150902	4.0ml	15 x 45mm	13-425	100 pcs
150903	8.0ml	17 x 61mm	15-425	100 pcs
150904	12.0ml	19 x 66mm	15-425	100 pcs
150905	16.0ml	21 x 71mm	18-400	100 pcs
150906	24.0ml	23 x 86mm	20-400	100 pcs
150907	30.0ml	27 x 75mm	24-400	100 pcs
150908	40.0ml	27 x 95mm	24-400	100 pcs
150909	60.0ml	27 x140mm	24-400	100 pcs

SCREW CAPS

PHENOLIC

Black screw caps, **solid top without liners**

CAT.NO.	CAP SIZE	CASE PACK
150910	8-425	100 pcs
150911	13-425	100 pcs
150912	15-425	100 pcs
150913	18-400	100 pcs
150914	20-400	100 pcs
150915	24-400	100 pcs

SCREW CAPS & SEPTA

PHENOLIC

Black screw caps, solid top with **SBR Liners**.
(Styrene Butadiene Rubber)

CAT.NO.	CAP SIZE	CASE PACK
150920	8-425	100 pcs
150921	13-425	100 pcs
150922	15-425	100 pcs
150923	18-400	100 pcs
150924	20-400	100 pcs
150925	24-400	100 pcs

SCREW CAPS & SEPTA

PHENOLIC

Black screw caps, solid top with **Butyl/PTFE liners**
Assures ultimate product safety

CAT.NO.	CAP SIZE	CASE PACK
150930	8-425	100 pcs
150931	13-425	100 pcs
150932	15-425	100 pcs
150933	18-400	100 pcs
150934	20-400	100 pcs
150935	24-400	100 pcs

SAMPLE VIALS



SCREW CAPS & SEPTA

PHENOLIC

Black screw caps, solid tops with **cork/PTFE liners**

CAT.NO.	CAP SIZE	CASE PACK
150940	8-425	100 pcs
150941	13-425	100 pcs
150942	15-425	100 pcs
150943	18-400	100 pcs
150944	20-400	100 pcs
150945	24-400	100 pcs

SCREW CAPS & SEPTA

PHENOLIC

Black screw caps, solid tops with **cork/aluminum liners**

CAT.NO.	CAP SIZE	CASE PACK
150960	8-425	100 pcs
150961	13-425	100 pcs
150962	15-425	100 pcs
150963	18-400	100 pcs
150964	20-400	100 pcs
150965	24-400	100 pcs

SCREW CAPS OPEN TOP

PHENOLIC

Black screw caps, **open top without liners**

CAT.NO.	CAP SIZE	CASE PACK
152950	8-425	100 pcs
152951	13-425	100 pcs
152952	15-425	100 pcs
152953	18-400	100 pcs
152954	20-400	100 pcs
152955	24-400	100 pcs

SELF-SEALING SEPTA

Silicone/PTFE faced liners for screw caps open top

CAT.NO.	DIAM	CAP SIZE	CASE PACK
152960	8mm	8-425	100 pcs
152961	11mm	13-425	100 pcs
152962	13mm	15-425	100 pcs
152963	16mm	18-400	100 pcs
152964	18mm	20-400	100 pcs
152965	22mm	24-400	100 pcs

SERUM BOTTLES



SERUM REACTION VIALS

BOROSILICATE GLASS

Withstand repeated sterilization; large-mouth opening for easy access; ideal for reactions, silylation and sealed storage with instant access via syringe.

Use aluminum crimp seals 20mm

CAT.NO.	VOLUME	SIZE	CASE PACK
---------	--------	------	-----------

CLEAR GLASS

152000	10ml	25x54mm	100 pcs
152001	20ml	32x58mm	100 pcs
152002	30ml	36x63mm	100 pcs
152003	50ml	43x73mm	100 pcs
152004	100ml	52x95mm	100 pcs

AMBER GLASS

152010	10ml	25x54mm	100 pcs
152011	20ml	32x58mm	100 pcs
152012	30ml	36x63mm	100 pcs
152013	50ml	43x73mm	100 pcs
152014	100ml	52x95mm	100 pcs

ALUMINUM CRIMP SEALS

CAT.NO.	TYPESIZE	CASE PACK
---------	----------	-----------

151230	Standard	20mm	100 pcs
151231	Tear-away	20mm	100 pcs
151232	Open Top	20mm	100 pcs

STANDARD- remove center portion

TEAR-AWAY- seal & septum are easily removed

ONE-PIECE- open center portion

STOPPERS

CAT.NO.	TYPESIZE	CASE PACK
---------	----------	-----------

151240	Butyl	20mm	100 pcs
151243	Silicone	20mm	100 pcs

FREEZE DRY STOPPERS

151248	Butyl- gray	20mm	100 pcs
151249	Butyl- red	13mm	100 pcs

ALUMINUM CRIMP SEALS & SEPTA

Crimp seals 20mm with center hole and mounted septa

CAT.NO.	DIAM	DESCRIPTION	CASE PACK
---------	------	-------------	-----------

151286	20mm	Butyl/PTFE	100 pcs
151287	20mm	Silicone/PTFE	100 pcs
151222	20mm	Rubber-Butyl/PTFE	100 pcs
151290	20mm	Rubber	100 pcs

INJECTION VIALS



INJECTION VIALS

BOROSILICATE GLASS

Manufactured from borosilicate glass type I. Protects against product contamination caused by alkali which can be extracted from ordinary glass.

Use aluminum crimp seals 20mm

CAT.NO.	VOLUME	SIZE	CASE PACK
153200	5.0ml	20x 38mm	100 pcs
153201	10.0ml	20x 55mm	100 pcs
153202	20.0ml	23x 75mm	100 pcs
153203	30.0ml	30x 75mm	100 pcs
153204	50.0ml	30x100mm	100 pcs

ALUMINUM CRIMP SEALS

Standard, Tear-Away and One-Piece silver or colored caps available.

CAT.NO.	TYPE	SIZE	CASE PACK
151230	Standard	20mm	100 pcs
151231	Tear-Away	20mm	100 pcs
151232	One-Piece	20mm	100 pcs

STANDARD- remove center portion
TEAR-AWAY- seal & septum are easily removed
ONE-PIECE- open center portion

STOPPERS

CAT.NO.	TYPE	SIZE	CASE PACK
151240	Butyl	20mm	100 pcs
151243	Silicone	20mm	100 pcs

FREEZE DRY STOPPERS

151248	Butyl- gray	20mm	100 pcs
151249	Butyl- red	13mm	100 pcs

SNAP-ON® CAPS- 20mm

POLYETHYLENE

- For use with all crimp top vials with 20mm crimp neck
- Easily snaps on eliminating the use of crimpers
- Holds approx. 30 psi internal pressure
- Snap caps have a consistent seal pressure for all samples reducing the chance of failures caused by improper crimping

Available with 2 different liners mounted inside the caps
- Silicone/PTFE
- Butyl/PFTE

SNAP-ON® CAPS WITH SEPTA

CAT.NO.	DESCRIPTION	THICKNESS	CASE PACK
158250	Silicone/PTFE	1mm	100 pcs
158255	Silicone/PTFE	2mm	100 pcs
158260	Butyl/PTFE	1mm	100 pcs
158265	Butyl/PTFE	2mm	100 pcs

LOW PROFILE VIALS



LOW PROFILE VIALS

BOROSILICATE GLASS

Low profiles for greater stability and less dead volume above sample. Vials come without screw caps.

CAT.NO.	VOLUME	SIZE	CAP SIZE	CASE PACK
153000	2ml	15x28mm	13-425	100 pcs
153001	4ml	17x38mm	15-425	100 pcs
153002	8ml	19x40mm	15-425	100 pcs

SCREW CAPS

PHENOLIC

Black screw caps with Styrene Butadiene Liners

CAT.NO.	SIZE	CASE PACK
150921	13-425	100 pcs
150922	15-425	100 pcs

Black screw caps with butyl/PTFE liners

150931	13-425	100 pcs
150932	15-425	100 pcs

BIO-GRIP CULTURE VIALS

BOROSILICATE GLASS

Micro culture vials with flat bottom are manufactured from borosilicate glass type I. Vials have deep-skirted Bio-Grip screw caps for safer, dependable handling when working with infectious materials.

Bio-Grip vials can be autoclaved.

CAT.NO.	VOLUME	SIZE	CAP SIZE	CASE PACK
153100	4ml	15x49mm	13-415	100 pcs
153101	8ml	17x68mm	15-415	100 pcs
153102	12ml	19x70mm	15-415	100 pcs

BIO-GRIP SCREW CAPS

PHENOLIC

Black screw caps with Styrene Butadiene Rubber liners

CAT.NO.	CAP SIZE	CASE PACK
153110	13-415	100 pcs
153111	15-415	100 pcs

Black screw caps with butyl/PTFE liners

CAT.NO.	CAP SIZE	CASE PACK
153120	13-415	100 pcs
153121	15-415	100 pcs



VIALSTATION®

ACRYLIC

These Vialstations are made for use with Limited Volume Inserts and Autosampler Vials.

They are made of heavy acrylic glass and stand firm on your lab bench without sliding around. Reagents and samples may be added and closed prior to placing the vials in the auto-sampler.

These Vialstations are especially handy for conical and round bottom vials which will not stand by themselves.

The design allows crimping while vials are still in the vial-station. Not applicable for all versions.

CAT.NO.	VIAL/INSERT	HOLES	CASE PACK
153500	151111/ 151112	50	1 each
153501	150710/ 150714/ 150743	50	1 each
153502	150610/ 150730	50	1 each
153503	150613	50	1 each
153504	152611/ 152601	50	1 each
153505	150720/ 150717	50	1 each
153506	151120/ 150640/ 155600	50	1 each
153507	151140/ 151141/ 151142	50	1 each
153508	151100/ 151106	50	1 each
153509	150741/ 150742/ 150820	50	1 each
153511	150745/ 150760/ 150770	28	1 each

All Vialstations have the dimension 190 x 90mm



VIALTAINER®

The solution to storage problems. For collecting, handling cataloging and storing samples.

A convenient, compact and readily accessible means of storing samples. Made from clear polystyrene. Accommodates either 77 or 88 vials.

Two sizes are available: 200x140x50mm and 150x90x40mm

Alpha-numerical indexing of contents provides quick identification and location of samples.

Vialtainers come without vials

CAT.NO.	VIAL SIZE	CAPACITY	CASE PACK
151340	12x32mm	77 VIALS	1 each
151341	15x45mm	88 VIALS	1 each

INDEX CARDS

CAT.NO.	VIALTAINER	CASE PACK
151350	151340	10 pcs
151351	151341	10 pcs

CRIMPER



CRIMPER

Manual crimpers with steel jaws for securing aluminum crimp seals.

CAT.NO.	SIZE	CASE PACK
150000	8 mm	1 each
150001	11 mm	1 each
150002	13 mm	1 each
150003	20 mm	1 each

DECRIMPER

Makes seal removal quickly and easily.

CAT.NO.	SIZE	CASE PACK
150010	8 mm	1 each
150011	11 mm	1 each
150012	13 mm	1 each
150013	20 mm	1 each



DECAPPER PLIER

Inexpensive pliers for removal of seals.

CAT.NO.	SIZE	CASE PACK
150020	8 mm	1 each
150021	11 mm	1 each
150022	13 mm	1 each
150023	20 mm	1 each

ORDERING INFORMATION

TERMS & CONDITIONS OF SALE

Payment terms are 30 days net from invoice date. All prices are ex works and excl. V.A.T.

SHIPPING

All orders up to 30 kg per box are shipped with DPD, UPS, DHL, TNT or other similar carrier.

RETURNS

All returns must have our authorization prior to shipment. Please contact us if products should be returned for instructions. BCS cannot be held liable for products returned without authorization.

PRODUCT CHANGES

BCS reserves the right to change product specifications, design, quantities or prices without notice and liability for such changes.

CONDITIONS

All products in this catalog are intended for scientific, laboratory, research and industrial use only. The buyer is responsible for determining the suitability of any product for his own application. BCS assumes no liability under any circumstances for any incidental, consequential or compensatory damages arising from use of, or in conjunction with its products. Maximum liability shall be the invoice amount of the product. The information in this catalog is, to the best of our knowledge, correct and accurate but is not guaranteed to be so.

PACKAGING

Case pack quantities of products that are counted by weight are approximate.

DAMAGE CLAIMS

We have no liability for damages caused by freight forwarders. All goods are shipped at buyers risk. Insurance must be covered by the customer. Claims should be reported to the carrier immediately. Failure to do so makes you liable for payments of those goods should damage claims be rejected by the carrier.

WARRANTY

BCS warrants all products manufactured by it to be free from defects in material and/or workmanship at time of receipt by the customer.

CROSS REFERENCES

Where OEM numbers appear, they are listed for cross reference purposes only. We believe our products are equivalent but they may not be identical.

BROWN CHROMATOGRAPHY SUPPLIES

P.O. BOX 1135
D-97861 WERTHEIM
GERMANY

TELEFON ++49-9342- 4787
FAX ++49-9342-37137

email: brownchrom@aol.com
www.brown.de

